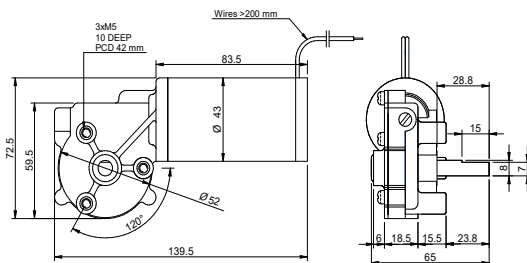
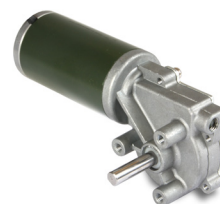


DRAWING (mm)



PHOTO



MODEL NO. DESIGNATION

WLD4383 - VOLTAGE - GEAR RATIO - FEATURE

Example: WLD4383-24-31-ME

ME = Magnetic encoder
OE = Optical encoder

ACCESSORIES



● C = customizations are offered on demand even for smaller quantities. Typical customizations are indicated with a green dot at column end. Please contact us for any customization request.

GEAR MOTOR DATA

C

Gear ratio		31:1	61:1	86:1
Nominal speed	rpm	100	52	37
Nominal torque	Nm	0.75	1.3	1.7
Peak torque	Nm	1.7	1.9	2.0
Nominal power	W	8.1	7.3	6.6
Gearbox efficiency	%	55	50	45
Weight	kg	0.63	0.63	0.63

OTHER GEAR MOTOR DATA

C

Service life	h	3000
Performance tolerances	%	± 15
Operating temperature	°C	-10 to 60
IP rating ¹		IP40 IP51
Manufacturing standard		ISO 9001
CE label UL label		No No

BRUSHED DC MOTOR DATA

C

Nominal voltage	V	24
Nominal current	A	1.1
Nominal speed	rpm	3200
Nominal torque	Ncm	4.4
Nominal power	W	15
No load current	A	0.5
No load speed	rpm	4000
Start/stall current	A	4
Start/stall torque	Ncm	18
Motor commutation		Carbon brush
Motor rotor		Iron
Motor cable		AWG14
Motor cable length	mm	200
Weight	kg	0.36

NOTES

1. IP51 without encoder, IP40 with encoder.

GEARBOX DATA

C

Gearbox type	Worm gearbox
Gear angle	Left
Material gear	Plastic ●
Bearing type	Sleeve bearing
Shaft material	Hardened stainless steel ●

ENCODER OPTIONS

MAGNETIC

OPTICAL

C

Pulses per revolution		18x2	1000
Channels		2	2
Phase shift	°	90 ± (1/8)T	90
Encoder rear cover material		Plastic	-
Size	mm	Width 47 Length 37 Depth 62.5	-
Harness cable		AWG28	-
Harness length	mm	420	350
Connection		OR Vcc GRN GND YLW SIG A BLU SIG B	RED +5 VDC RED+WT 0 VDC BLU A+ BLU+WT A- BLK B+ BLK+WT B-
Supply voltage	V	Min. 5 Max. 20	Min. 5 Max. 20
Supply current	mA	-	< 80
Output wave		-	Line driver
Open collector output		Requires external output resistors	-
Frequency response	kHz	-	Max. 25
Weight	g	100	100