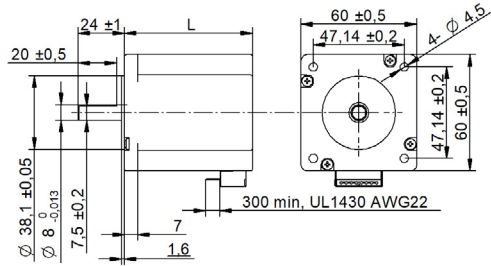
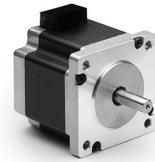


SHW60-18 Series cable □ 60 mm

DRAWING (mm)



PHOTO



MODEL NAME DESIGNATION

SHW3520 - STEP ANGLE - CURRENT

Example: SHW35-09-100



OPTIONS MOTOR DRIVERS AND POWER SUPPLIES



MOTOR FEATURES

Step angle	1.8
Step angle accuracy	± 5% full step no load
Shaft material	X8CrNiS18-9 SUS303
Bearing type	Ball bearing
Radial play	0.02 mm 450 g
Axial play	0.08 mm 450 g
Max. radial force	75N 20 mm from shaft
Max. axial force	15N
Dielectric strength	600VAC 1 sec.
Insulation resistance	100MΩ 500VDC
Ambient temperature	-20° - (+50°)
Insulation class	Class B
IP rating	IP30
Connection harness	UL 1430 AWG22 300 mm
Connector	Not in standard

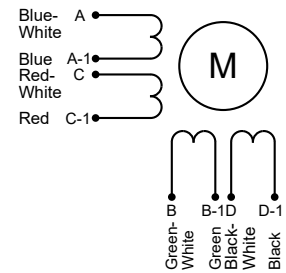
CUSTOMIZATION EXAMPLES

Shaft configurations
Bearing type and preload
Temperature range
IP rating
Winding and performance optimization
Cabling and harness
Gear box to motor combinations
Encoder to motor combinations

OPTIONS

Stepper motor drivers Transmotec DS series
Power supplies Transmotec LRS series

EXCITATION SEQUENCE TABLE



CW	A	C	B	D
1	●		●	
2		●	●	
3		●		●
4	●			●
1	●		●	

● = + Polarity

MOTOR DATA

Graph	A	B	C	D
Motor model	SHW6047-18-280	SHW6056-18-280	SHW6067-18-280	SHW6088-18-280
Holding torque Nm	1.10	1.65	2.10	3.00
Detent torque Nm	0.05	0.07	0.09	0.12
Rotor inertia gcm ²	275	400	570	840
Current phase A	2.80	2.80	2.80	2.80
Resistance phase Ω	0.75	0.90	1.20	1.50
Inductance mH	2	3.6	4.6	6.8
Length mm	47.0	56.0	67.0	88.0
Weight Kg	0.600	0.770	1.200	1.400

SPEED | TORQUE PERFORMANCE GRAPH PULL OUT

Graph	A	B	C	D
Supply voltage VDC	48	48	48	48
Current phase A	2.7	2.7	2.7	2.7
Phase connection	Parallel connection			

