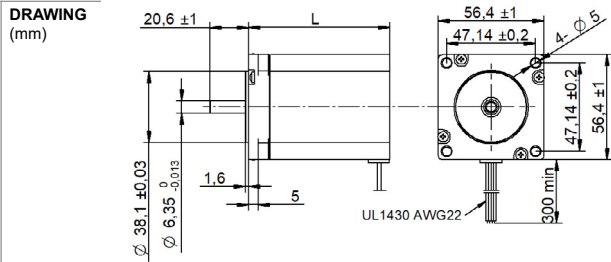
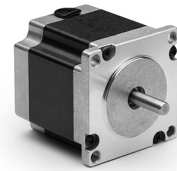


SHW57-18 Series cable □ 57 mm



PHOTO



MODEL NAME DESIGNATION

SHW3520 - STEP ANGLE - CURRENT

Example: SHW35-09-100



OPTIONS MOTOR DRIVERS AND POWER SUPPLIES



MOTOR FEATURES

Step angle	1.8
Step angle accuracy	± 5% full step no load
Shaft material	X8CrNiS18-9 SUS303
Bearing type	Ball bearing
Radial play	0.02 mm 450 g
Axial play	0.08 mm 450 g
Max. radial force	75N 20 mm from shaft
Max. axial force	15N
Dielectric strength	600VAC 1 sec.
Insulation resistance	100MΩ 500VDC
Ambient temperature	-20° - (+50°)
Insulation class	Class B
IP rating	IP30
Connection harness	UL 1430 AWG22 300 mm
Connector	Not in standard

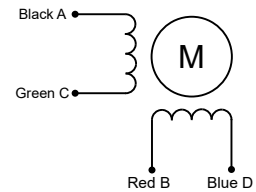
CUSTOMIZATION EXAMPLES

- Shaft configurations
- Bearing type and preload
- Temperature range
- IP rating
- Winding and performance optimization
- Cabling and harness
- Gear box to motor combinations
- Encoder to motor combinations

OPTIONS

- Stepper motor drivers Transmotec DS series
- Power supplies Transmotec LRS series

EXCITATION SEQUENCE TABLE



CW	A	C	B	D
1	●		●	
2		●	●	
3		●		●
4	●			●
1	●		●	

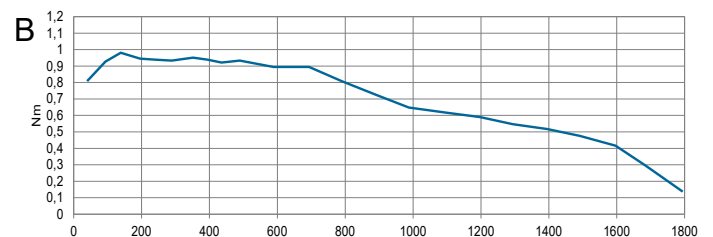
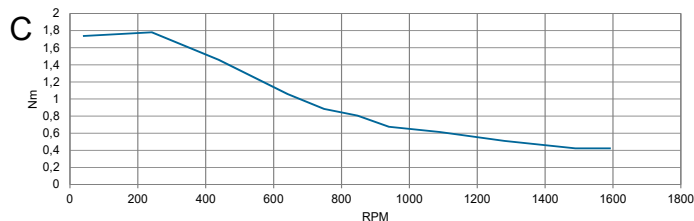
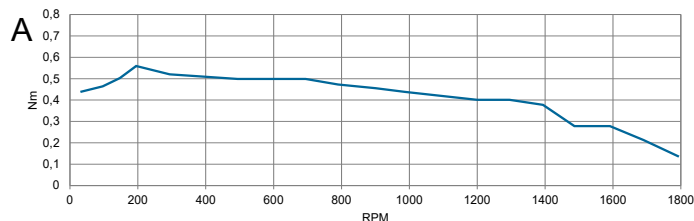
● = + Polarity

MOTOR DATA

Graph	A	B	C	D
Motor model	SHW5740-18-280	SHW5750-18-280	SHW5775-18-280	SHW57115-18-280
Holding torque Nm	0.55	1.00	1.89	3.00
Detent torque Nm	0.020	0.035	0.068	0.100
Rotor inertia gcm ²	120	275	480	650
Current phase A	2.80	2.80	2.80	2.80
Resistance phase Ω	0.70	0.83	1.13	2.10
Inductance mH	1.4	2.2	3.6	10
Length mm	40.0	50.0	75.0	115.0
Weight Kg	0.450	0.650	1.000	1.800

SPEED | TORQUE PERFORMANCE GRAPH PULL OUT

Graph	A	B	C	D
Supply voltage VDC	48	48	48	
Current phase A	2.8	2.8	2.8	



D