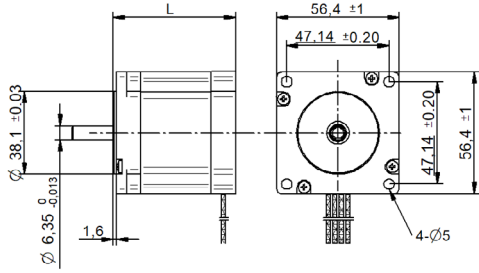
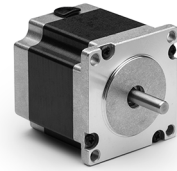


# SHW57-09 Series □ 57 mm

## DRAWING (mm)



## PHOTO



## MODEL NAME DESIGNATION

SHW3520 - STEP ANGLE - CURRENT



Example: SHW35-09-100

## OPTIONS MOTOR DRIVERS AND POWER SUPPLIES



## MOTOR FEATURES

Step angle	0.9
Step angle accuracy	± 5% full step no load
Shaft material	X8CrNiS18-9   303
Bearing type	Ball bearing
Radial play	0.02 mm   450 g
Axial play	0.08 mm   450 g
Max. radial force	75N   20 mm from shaft
Max. axial force	15N
Dielectric strength	600VAC   1 sec.
Insulation resistance	100MΩ   500VDC
Ambient temperature	-20° - (+50°)
Insulation class	Class B
IP rating	IP30
Connection leads	UL 1430 AWG22   300 mm
Connector	No

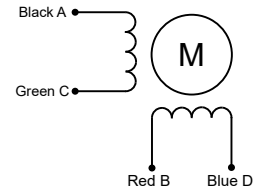
## CUSTOMIZATION EXAMPLES

- Shaft configurations
- Bearing type and preload
- Temperature range
- IP rating
- Winding and performance optimization
- Cabling and harness
- Gear box to motor combinations
- Encoder to motor combinations

## OPTIONS

- Stepper motor drivers Transmotec DS series
- Power supplies Transmotec LRS series

## EXCITATION SEQUENCE TABLE



CW	A	C	B	D
1	●		●	
2		●	●	
3		●		●
4	●			●
1	●		●	

● = + Polarity

## MOTOR DATA

Graph	A	B	C
Motor model	SHW5741-09-280	SHW5756-09-280	SHW5776-09-280
Holding torque mNm	0.550	1.200	1.800
Detent torque Nm	0.0210	0.0400	0.0680
Rotor inertia gcm <sup>2</sup>	120	300	480
Current   phase A	2.80	2.80	2.80
Resistance   phase Ω	0.70	0.90	1.13
Inductance   mH	2.2	4.5	5.6
Length mm	41.0	56.0	76.0
Weight Kg	0.450	0.700	1.000

## SPEED | TORQUE PERFORMANCE GRAPH PULL OUT

Graph	A	B	C
Supply voltage VDC	48	48	48
Current   phase A	2.8	2	2

