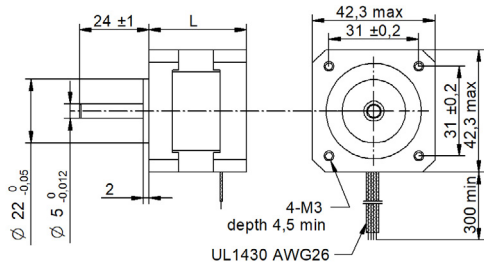


SHW42-18 Series cable □ 42 mm

DRAWING (mm)



PHOTO



MODEL NAME DESIGNATION

SHW3520 - STEP ANGLE - CURRENT

Example: SHW35-09-100



OPTIONS MOTOR DRIVERS AND POWER SUPPLIES



MOTOR FEATURES

Step angle	1.8
Step angle accuracy	± 5% full step no load
Shaft material	X8CrNiS18-9 SUS303
Bearing type	Ball bearing
Radial play	0.02 mm 450 g
Axial play	0.08 mm 450 g
Max. radial force	28N 20 mm from shaft
Max. axial force	10N
Dielectric strength	600VAC 1 sec.
Insulation resistance	100MΩ 500VDC
Ambient temperature	-20° - (+50°)
Insulation class	Class B
IP rating	IP30
Connection harness	UL 1430 AWG26 300 mm
Connector	Not in standard

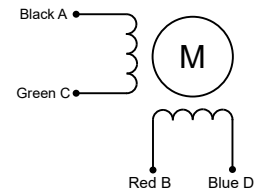
CUSTOMIZATION EXAMPLES

- Shaft configurations
- Bearing type and preload
- Temperature range
- IP rating
- Winding and performance optimization
- Cabling and harness
- Gear box to motor combinations
- Encoder to motor combinations

OPTIONS

- Stepper motor drivers Transmotec DS series
- Power supplies Transmotec LRS series

EXCITATION SEQUENCE TABLE



CW	A	C	B	D
1	●		●	
2		●	●	
3		●		●
4	●			●
1	●		●	

● = + Polarity

MOTOR DATA

Graph	A	B	C	D
Motor model	SHW4226-18-040	SHW4234-18-133	SHW4240-18-168	SHW4248-18-168
Holding torque mNm	170	220	360	440
Detent torque mNm	7.5	12.0	15.0	20.0
Rotor inertia gcm ²	20	35	54	68
Current phase A	0.40	1.33	1.68	1.68
Resistance phase Ω	24.00	2.10	1.65	1.65
Inductance mH	30	2.5	3.2	2.8
Length mm	26.0	33.5	39.5	47.5
Weight Kg	0.150	0.220	0.280	0.350

SPEED | TORQUE PERFORMANCE GRAPH PULL OUT

Graph	A	B	C	D
Supply voltage VDC	36	36	36	36
Current phase A	0.42	1.36	1.69	1.69

