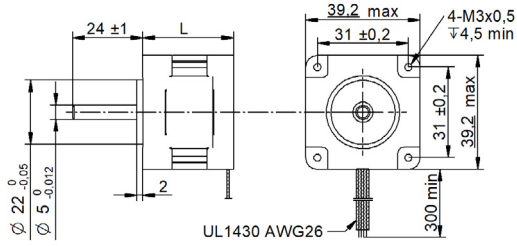


SHW39-18 Series cable □ 39 mm

DRAWING (mm)



PHOTO



MODEL NAME DESIGNATION

SHW3520 - STEP ANGLE - CURRENT

Example: SHW35-09-100



OPTIONS MOTOR DRIVERS AND POWER SUPPLIES



MOTOR FEATURES

Step angle	1.8
Step angle accuracy	± 5% full step no load
Shaft material	X8CrNiS18-9 SUS303
Bearing type	Ball bearing
Radial play	0.02 mm 450 g
Axial play	0.08 mm 450 g
Max. radial force	28N 20 mm from shaft
Max. axial force	10N
Dielectric strength	600VAC 1 sec.
Insulation resistance	100MΩ 500VDC
Ambient temperature	-20° - (+50°)
Insulation class	Class B
IP rating	IP30
Connection harness	UL 1430 AWG26 300 mm
Connector	Not in standard

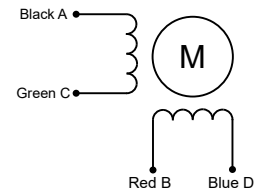
CUSTOMIZATION EXAMPLES

- Shaft configurations
- Bearing type and preload
- Temperature range
- IP rating
- Winding and performance optimization
- Cabling and harness
- Gear box to motor combinations
- Encoder to motor combinations

OPTIONS

- Stepper motor drivers Transmotec DS series
- Power supplies Transmotec LRS series

EXCITATION SEQUENCE TABLE



CW	A	C	B	D
1	●		●	
2		●	●	
3		●		●
4	●			●
1	●		●	

● = + Polarity

MOTOR DATA

Graph	A	B	C	D
Motor model	SHW3920-18-040	SHW3931-18-030	SHW3934-18-040	SHW3938-18-050
Holding torque mNm	85	180	210	360
Detent torque mNm	8.0	10.0	12.0	12.0
Rotor inertia gcm ²	0.12	0.18	20	0.2
Current phase A	0.40	0.30	0.40	0.50
Resistance phase Ω	6.60	40.00	30.00	24.00
Inductance mH	7	30	43	50
Length mm	20.0	31.0	34.0	38.0
Weight Kg	0.050	0.120	0.180	0.180

SPEED | TORQUE PERFORMANCE GRAPH PULL OUT

Graph	A	B	D
Supply voltage VDC	24	24	24
Current phase A	0.42	0.42	0.45

