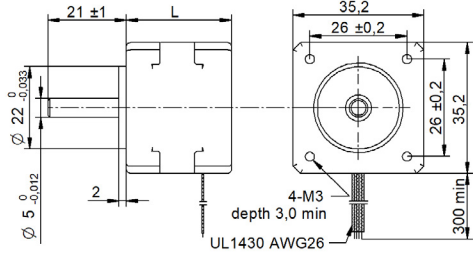


SHW35-18 Series cable □ 35 mm

DRAWING (mm)



PHOTO



MODEL NAME DESIGNATION

SHW3520 - STEP ANGLE - CURRENT

Example: SHW35-09-100



OPTIONS MOTOR DRIVERS AND POWER SUPPLIES



MOTOR FEATURES

Step angle	1.8
Step angle accuracy	± 5% full step no load
Shaft material	X8CrNiS18-9 SUS303
Bearing type	Ball bearing
Radial play	0.02 mm 450 g
Axial play	0.08 mm 450 g
Max. radial force	28N 20 mm from shaft
Max. axial force	10N
Dielectric strength	600VAC 1 sec.
Insulation resistance	100MΩ 500VDC
Ambient temperature	-20° - (+50°)
Insulation class	Class B
IP rating	IP30
Connection harness	UL 1430 AWG26 300 mm
Connector	Not in standard

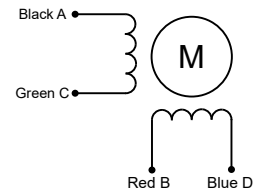
CUSTOMIZATION EXAMPLES

- Shaft configurations
- Bearing type and preload
- Temperature range
- IP rating
- Winding and performance optimization
- Cabling and harness
- Gear box to motor combinations
- Encoder to motor combinations

OPTIONS

- Stepper motor drivers Transmotec DS series
- Power supplies Transmotec LRS series

EXCITATION SEQUENCE TABLE



CW	A	C	B	D
1	●		●	
2		●	●	
3		●		●
4	●			●
1	●		●	

● = + Polarity

MOTOR DATA

Graph	A	B	C
Motor model	SHW3526-18-028	SHW3528-18-050	SHW3536-18-100
Holding torque mNm	70	100	140
Detent torque mNm	6.0	8.0	10.0
Rotor inertia gcm ²	10	11	14
Current phase A	0.28	0.50	1.00
Resistance phase Ω	26.00	20.00	2.70
Inductance mH	27	14	4.3
Length mm	26.0	28.0	36.0
Weight Kg	0.130	0.140	0.180

SPEED | TORQUE PERFORMANCE GRAPH PULL OUT

Graph	A	B	C
Supply voltage VDC	24	24	24
Current phase A	0.35	0.5	1.0

