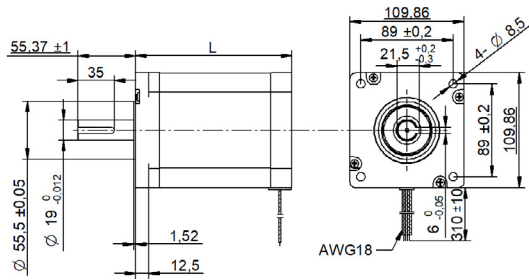
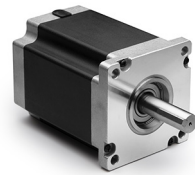


SHW110-18 Series cable □ 110 mm

DRAWING (mm)



PHOTO



MODEL NAME DESIGNATION

SHW3520 - STEP ANGLE - CURRENT

Example: SHW35-09-100



OPTIONS MOTOR DRIVERS AND POWER SUPPLIES



MOTOR FEATURES

Step angle	1.8
Step angle accuracy	± 5% full step no load
Shaft material	X8CrNiS18-9 SUS303
Bearing type	Ball bearing
Radial play	0.02 mm 450 g
Axial play	0.08 mm 450 g
Max. radial force	330N 20 mm from shaft
Max. axial force	100N
Dielectric strength	600VAC 1 sec.
Insulation resistance	100MΩ 500VDC
Ambient temperature	-20° - (+50°)
Insulation class	Class B
IP rating	IP30
Connection harness	AWG18 310 mm
Connector	Not in standard

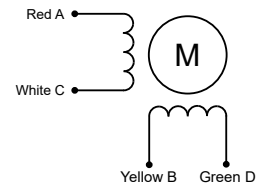
CUSTOMIZATION EXAMPLES

- Shaft configurations
- Bearing type and preload
- Temperature range
- IP rating
- Winding and performance optimization
- Cabling and harness
- Gear box to motor combinations
- Encoder to motor combinations

OPTIONS

- Stepper motor drivers Transmotec DS series
- Power supplies Transmotec LRS series

EXCITATION SEQUENCE TABLE



CW	A	C	B	D
1	●		●	
2		●	●	
3		●		●
4	●			●
1	●		●	

● = + Polarity

MOTOR DATA

Graph	A	B	C
Motor model	SHW11099-18-550	SHW110150-18-650	SHW110201-18-800
Holding torque Nm	11.20	21.00	28.00
Detent torque Nm	0.55	1.09	1.62
Rotor inertia gcm ²	3000	5900	7500
Current phase A	5.50	6.50	8.00
Resistance phase Ω	0.70	0.72	0.67
Inductance mH	9.8	11.5	12
Length mm	99.0	150.0	201.0
Weight Kg	5.000	8.400	11.700

SPEED | TORQUE PERFORMANCE GRAPH PULL OUT

Graph	A	B	C
Supply voltage VDC			
Current phase A			

