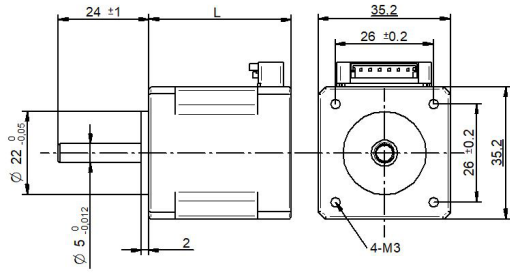
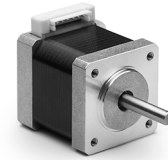


# SHC35-18 Series connector □ 35 mm

DRAWING (mm)



PHOTO



## MODEL NAME DESIGNATION

SHW3520 - STEP ANGLE - CURRENT

Example: SHW35-09-100



## OPTIONS MOTOR DRIVERS AND POWER SUPPLIES



## MOTOR FEATURES

Step angle	1.8
Step angle accuracy	± 5% full step no load
Shaft material	X8CrNiS18-9   303
Bearing type	Ball bearing
Radial play	0.02 mm   450 g
Axial play	0.08 mm   450 g
Max. radial force	28N   20 mm from shaft
Max. axial force	10N
Dielectric strength	600VAC   1 sec.
Insulation resistance	100MΩ   500VDC
Ambient temperature	-20° - (+50°)
Insulation class	Class B
IP rating	IP30
Connection harness	UL 1061 AWG26   300 mm
Connector	JST B6B-EH-A

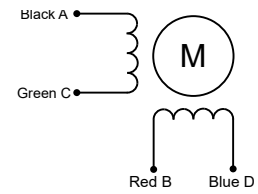
## CUSTOMIZATION EXAMPLES

- Shaft configurations
- Bearing type and preload
- Temperature range
- IP rating
- Winding and performance optimization
- Cabling and harness
- Gear box to motor combinations
- Encoder to motor combinations

## OPTIONS

- Stepper motor drivers Transmotec DS series
- Power supplies Transmotec LRS series

## EXCITATION SEQUENCE TABLE



PIN	2	4	3	5
CW	A	C	B	D
1	●		●	
2		●	●	
3		●		●
4	●			●
1	●		●	

● = + Polarity

## MOTOR DATA

Graph	A	B		
Motor model	SHC3538-18-120	SHC3544-18-120		
Holding torque mNm	0.230	0.280		
Detent torque Nm	0.0180	0.0200		
Rotor inertia gcm <sup>2</sup>	20	28		
Current   phase A	1.20	1.20		
Resistance   phase Ω	3.20	3.20		
Inductance   mH	4	5.2		
Length mm	38.0	44.0		
Weight Kg	0.210	0.230		

## SPEED | TORQUE PERFORMANCE GRAPH PULL OUT

Graph	A	B		
Supply voltage VDC	24	24		
Current   phase A	1.2	1.2		

