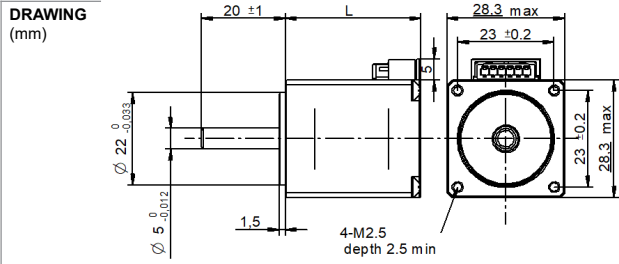
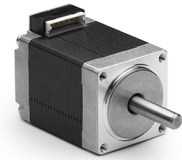


SHC28-18 Series connector □ 28 mm



PHOTO



MODEL NAME DESIGNATION

SHW3520 - STEP ANGLE - CURRENT

Example: SHW35-09-100



OPTIONS MOTOR DRIVERS AND POWER SUPPLIES



MOTOR FEATURES

Step angle	1.8
Step angle accuracy	± 5% full step no load
Shaft material	X8CrNiS18-9 303
Bearing type	Ball bearing
Radial play	0.02 mm 400 g
Axial play	0.08 mm 400 g
Max. radial force	28N 5 mm from shaft
Max. axial force	7N
Dielectric strength	600VAC 1 sec.
Insulation resistance	100MΩ 500VDC
Ambient temperature	-20° - (+50°)
Insulation class	Class B
IP rating	IP30
Connection harness	UL1 430 AWG26 300 mm
Connector	Molex 53253-0670

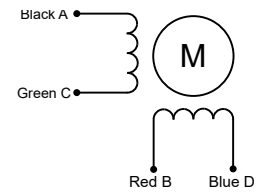
CUSTOMIZATION EXAMPLES

- Shaft configurations
- Bearing type and preload
- Temperature range
- IP rating
- Winding and performance optimization
- Cabling and harness
- Gear box to motor combinations
- Encoder to motor combinations

OPTIONS

- Stepper motor drivers Transmotec DS series
- Power supplies Transmotec LRS series

EXCITATION SEQUENCE TABLE



PIN	1	4	3	6
CW	A	C	B	D
1	●		●	
2		●	●	
3		●		●
4	●			●
1	●		●	

● = + Polarity

MOTOR DATA

Graph	A	B	C
Motor model	SHC2832-18-067	SHC2840-18-067	SHC2852-18-067
Holding torque mNm	0.065	0.097	0.120
Detent torque Nm	0.0050	0.0060	0.0080
Rotor inertia gcm ²	9	12	18
Current phase A	0.67	0.67	0.67
Resistance phase Ω	5.60	6.80	9.20
Inductance mH	4	4.8	5.6
Length mm	32.0	40.0	51.5
Weight Kg	0.110	0.140	0.200

SPEED | TORQUE PERFORMANCE GRAPH PULL OUT

Graph	A	B	C
Supply voltage VDC	24	24	24
Current phase A	0.67	0.67	0.67

