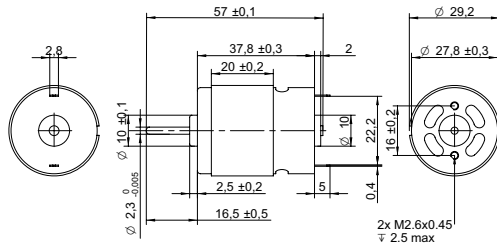
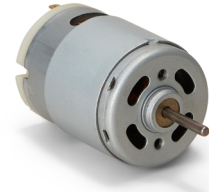


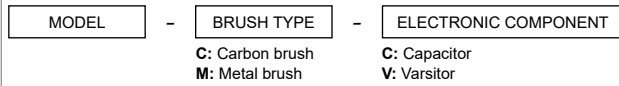
DRAWING (mm)



PHOTO



MODEL NO. DESIGNATION



Example: LP3N-18200-CVC

OPTIONS POWER SUPPLIES

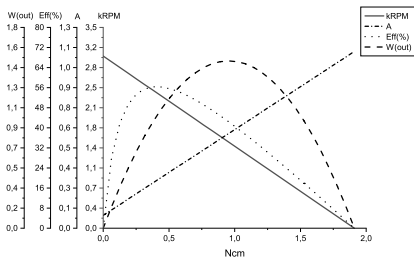


● C = customizations are offered on demand even for smaller quantities. Typical customizations are indicated with a green dot at column end. Please contact us for any customization request.

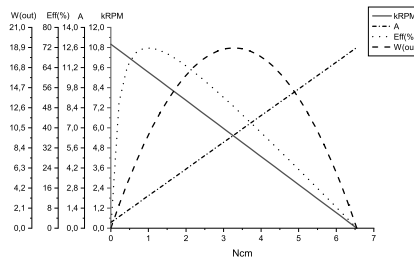
MOTOR DATA					C
Model number		LP3N-18200-CVC	LS3N-3558-CVC	LS3N-2870-CVC	LP3N-14350-CVC
Diameter	mm	29.2	29.2	29.2	29.2
Length	mm	37.8	37.8	37.8	37.8
Nominal voltage	V	6	6	7.2	12
No load current	A	0.08	0.4	0.32	0.06
Nominal current	A	0.2	2.2	1.7	0.2
Start/Stall current	A	1.1	13	7.9	0.8
No load speed	rpm	3000	11000	10000	3200
Nominal speed	rpm	2400	8800	8400	2600
Nominal torque	mNm	2.8	9.6	9.2	5.2
Start/Stall torque	mNm	19	66	51	26
Nominal power	W	0.7	8.9	8.3	1.4
Efficiency	%	61	68	66	57

COMMON MOTOR DATA					C
Shaft diameter	mm	2.3			●
Number of pole pairs		1			
Number of commutator segments		3			
Weight	g	99			
Service life	hrs	500 to 1000			
Operating temperature	°C	-10 to +60			●
Housing material		Galvanized steel			
Shaft material		High-carbon steel			●
Magnet material		Ferrite			
IP rating		IP40			
Motor insulation class		Level A			●

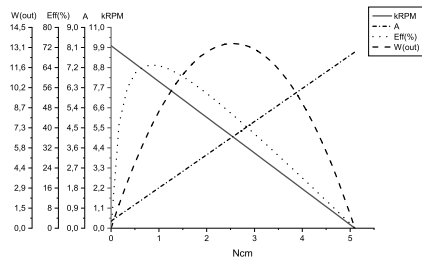
MOTOR DATA GRAPH - LP3N-18200-CVC



MOTOR DATA GRAPH - LS3N-3558-CVC



MOTOR DATA GRAPH - LS3N-2870-CVC



MOTOR DATA GRAPH - LP3N-14350-CVC

