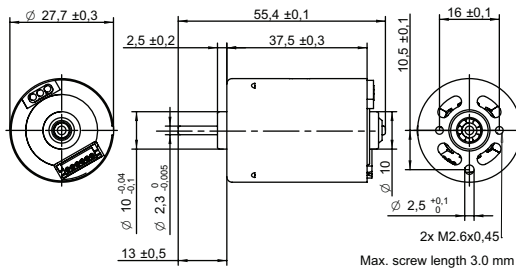


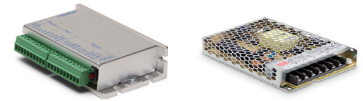
DRAWING (mm)



PHOTO



OPTIONS POWER SUPPLIES



● C = Customizations are offered on demand even for smaller quantities. Typical customizations indicated with green dot at column end. Please contact us for any customization request.

MOTOR TYPE

3-Phase, 120-degree, brushless DC Motor with integrated hall sensors.

MOTOR DATA		12V	24V	C
Nominal voltage	V	12	24	
Commutator (hall) voltage	V	3.3~5	3.3~5	
No load speed	rpm	6000		
No load current	mA	54	44	
Nominal speed	rpm	5100	5300	●
Nominal torque	mNm	6.6	7.4	
Nominal current	A	0.4	0.3	
Start/Stall torque	mNm	40	52	
Start/Stall current	A	2.1	1.4	
Max. efficiency	%	72	72	
Nominal power	W	3.5	4.1	
Terminal resistance	Ω	3.1	13	
Terminal inductance	mH	1.2	4.9	
Torque constant	mNm/A	19	38	
Speed constant	rpm/V	500	250	
Speed/ torque gradient	rpm/mNm	770	720	
Rotor inertia	gcm ²	14~17	50~58	

MECHANICAL DATA

Mechanical Data			C
Bearing type		Ball bearing	●
Axial play	mm	0	
Bearing radial clearance	µm	10	
Max. axial load (dynamic)	N	3.2	
Max. force for press fits (static)	N	4.9	

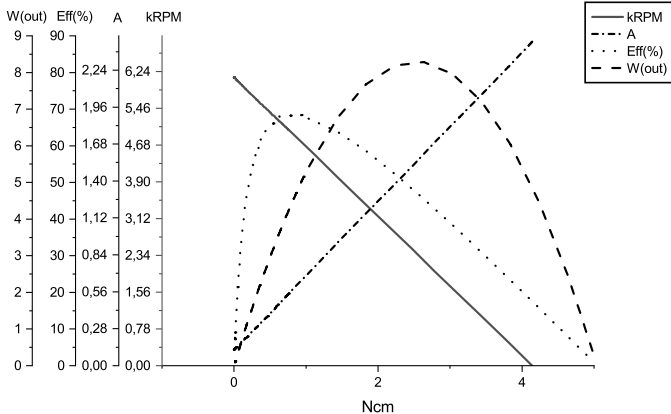
OTHER SPECIFICATIONS

Other Specifications		12V	24V	C
Number of pole pairs		2		
Number of phases		3		
Weight of motor	g	71	70	
Typical noise level	dBA	38	37	
Operating temperature	°C	-40 to +80		
Max. winding temperature	°C	150		
Motor insulation class		A		
IP rating		IP40		
Slot pole pairs		6S4P		
Rotor magnet		BNM-8		
Hall sensors and power harness length	mm	160 ± 10		●
Power harness end connector		A2502X-03P		●
Power harness		UL3132 22AWG 300V 150°C		●
Hall sensors harness end connector		KR1500 MX1.5mm		●
Hall sensors harness		UL1007 26AWG 300V 80°C		●
Shaft length from flange	mm	13		●
Shaft diameter Ø	mm	2.3		
Housing material		SECD-0 0.7T		
Shaft material		SUS420 J2		
Magnet material		Bonding NdFeB		
Rotor balancing grade		G6.3		
Service life	hrs	5000		
Manufacturing standard		ISO9001 TS16949		

CABLE AND PIN CONFIGURATION EXTERNAL DRIVER

Power		Hall		C
Phase	Cable color	Phase	Cable color	
U	Grey	HU	Green	
V	White	HV	Blue	
W	Brown	HW	Yellow	
		+5V	Red	
		GND	Black	

MOTOR DATA DIAGRAM 12V



MOTOR DATA DIAGRAM 24V

