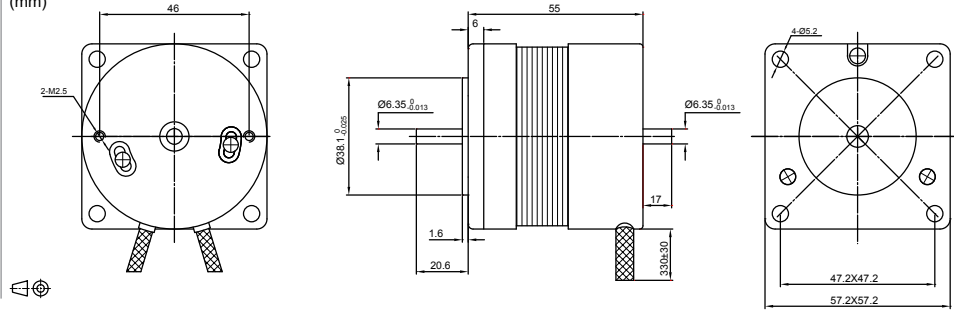
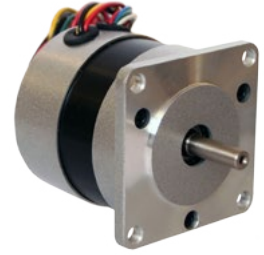


B5755 / Ø 57mm

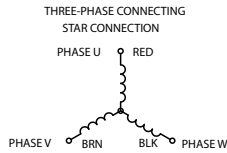
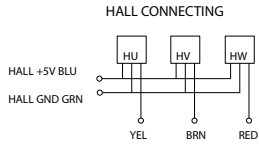
DRAWING (mm)



PHOTO



HALL CONNECTING



MODEL NO. DESIGNATION

MODEL - VOLTAGE

Example: B5755-12

MOTOR DATA

	Units	B5755-24	Units	B5755
Nominal voltage	V	24	Ambient temperature	°C -15...+40
Nominal power	W	52	Max. permissible winding temperature	°C 130
No load speed	rpm	5400	Max. permissible speed	rpm 13000
No load current	mA	500	Radial play	mm@g 0.025@460
Nominal speed	rpm	4000	Max. axial load (dynamic)	N 15
Nominal torque	mNm	110	Max. radial loading, 10 mm from flange	N 15
Nominal current	A	2.17	Number of pole pairs	2
Stall torque	mNm	330	Number of phases	3
Max. efficiency	%	75	Weight	g 500
Terminal resistance phase to phase	Ω	0.82		
Terminal inductance phase to phase	mH	2.3		
Torque constant	mNm / A	38.7		
Rotor inertia	gcm ²	75		