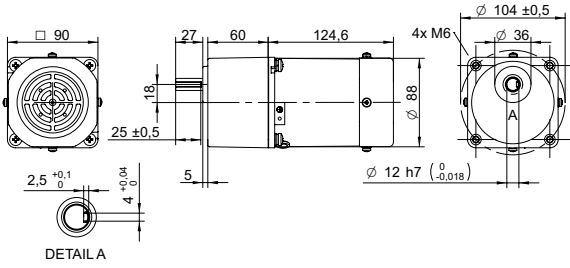
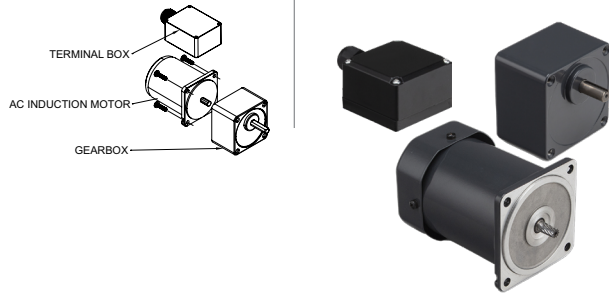


DRAWING (mm)

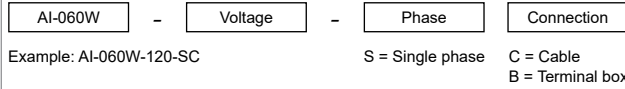


AC induction motor and gearbox also sold separately.

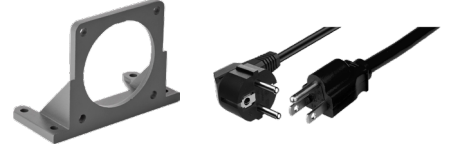
PHOTO



MODEL NO. DESIGNATION



ACCESSORIES<sup>1</sup>



● C = customizations are offered on demand even for smaller quantities. Typical customizations are indicated with a green dot at column end. Please contact us for any customization request.

GEAR MOTOR DATA

Gear ratio	3	3.6	5	6	7.5	9	10	12.5	15	18	20	25	30	36	40	50	60	75	90	100	120	150	180	200	250	300	500	600	750	C
Nominal torque Nm	0.92	1.1	1.5	1.8	2.3	2.8	3.1	3.8	4.6	5.5	5.5	6.9	8.3	10 <sup>2</sup>	10 <sup>2</sup>	10 <sup>2</sup>	10 <sup>2</sup>	10 <sup>2</sup>	10 <sup>2</sup>	10 <sup>2</sup>	10 <sup>2</sup>	10 <sup>2</sup>	10 <sup>2</sup>	10 <sup>2</sup>	10 <sup>2</sup>	10 <sup>2</sup>	10 <sup>2</sup>	10 <sup>2</sup>	10 <sup>2</sup>	●
Nominal speed rpm	520	430	310	260	210	170	160	120	100	86	78	62	52	43	39	31	26	21	17	16	13	10	9	8	6	5	3	3	2	
Nominal power W	50	50	50	50	50	50	50	50	50	50	45	45	45	45	41	32	27	22	18	16	14	11	9.0	8.1	6.5	5.4	3.2	2.7	2.2	
Gearb. nom. torq. <sup>3</sup> Nm	10	10	10	10	10	10	10	10	10	10	10	10	10	10	10	10	10	10	10	10	10	10	10	10	10	10	10	10	10	
Gearbox efficiency %	81	81	81	81	81	81	81	81	81	81	73	73	73	73	73	73	66	66	66	66	66	66	66	66	59	59	59	59	59	
Radial load <sup>4</sup> N	350	350	350	350	350	350	350	350	350	350	450	450	450	450	450	450	450	450	450	450	450	450	450	450	450	450	450	450	450	
Direction of rot.	CW	CW	CW	CW	CW	CW	CW	CW	CW	CW	CCW	CCW	CCW	CCW	CW	CW	CW	CW	CW	CW	CW	CW	CW	CW	CW	CCW	CCW	CCW	CCW	CCW
Weight kg	4.1	4.1	4.1	4.1	4.1	4.1	4.1	4.1	4.1	4.1	4.1	4.1	4.1	4.1	4.1	4.1	4.1	4.1	4.1	4.1	4.1	4.1	4.1	4.1	4.1	4.1	4.1	4.1	4.1	

OTHER GEAR MOTOR DATA

Service life h	10000	C
Performance tolerances	± 15	
Operating temperature °C	-10 to 40	
IP rating <sup>5</sup>	IP20   IP54	
Manufacturing standard	ISO 9001	
CE label   UL label	No   No	

AC INDUCTION MOTOR DATA

Nominal voltage V	120	C
No. of phases	1	
Frequency Hz	60	
No. of poles	4	
Nominal speed rpm	1600	
Nominal torque mNm	380	
Nominal current A	0.85	
Nominal power W	60	
Stall torque mNm	300	
Insulation class	B	
Motor cable	AWG18	
Motor cable length mm	300	
Capacitor included in delivery µF	12	
Insulation resistance MΩ	100	
Dielectric strength kV	1.5	
Max. winding temperature °C	80	
Weight kg	2.7	

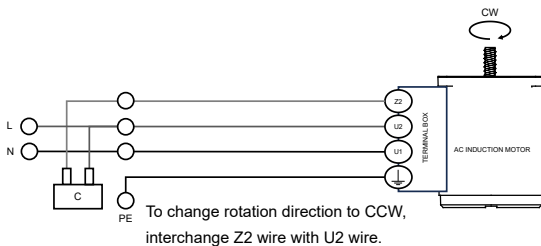
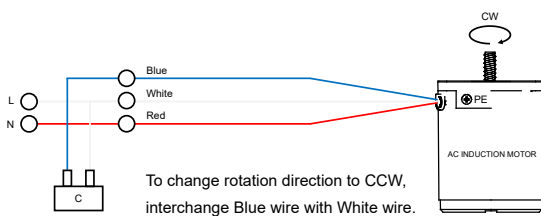
GEAR MOTOR RANGE AI-SERIES<sup>1</sup>

Nominal voltage V	See separate datasheet
Nominal power W	See separate datasheet
Dimension mm	See separate datasheet

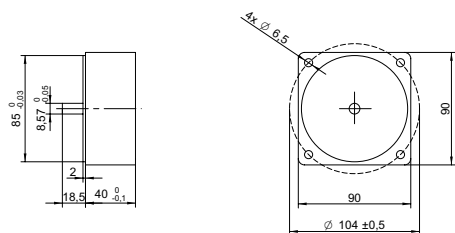
NOTES

1. See page 2 of this datasheet.
2. Gear motor torque limited by gearbox.
3. Gearbox nominal torque.
4. 20 mm from shaft.
5. IP20 without terminal box, IP54 with terminal box.
6. Cables/wires for connecting terminal box not included with AC induction motor.
7. Visit [www.transmotec.com](http://www.transmotec.com) to view datasheets.

WIRING DIAGRAM AC INDUCTION MOTOR<sup>6</sup>



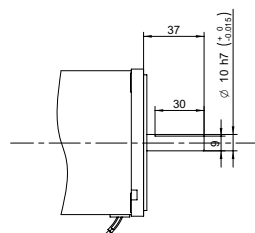
## DECIMAL GEARBOX<sup>1</sup>



### DECIMAL GEARBOX DATA

Model designation	S90A-Y010	
Gear ratio	10:1	
Nominal torque	Nm	10
Description	Connected between AC motor and existing gearbox to decrease the speed further than the gear ratio listed in the table.	

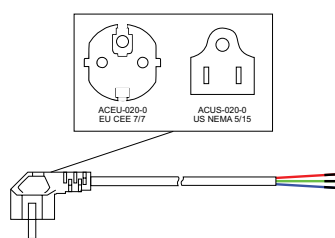
## OUTPUT SHAFT D-CUT



### DECIMAL GEARBOX DATA

Model designation Contact us for more information.

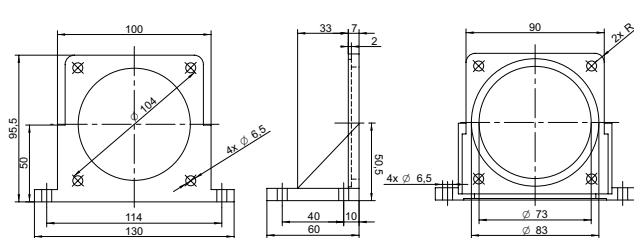
## POWER CABLE



### POWER CABLE DATA

Model designation	ACEU-020-0   ACUS-020-0	
Standard	EU CEE 7/7   US NEMA 5/15	
Cable length	m   ft	2   8

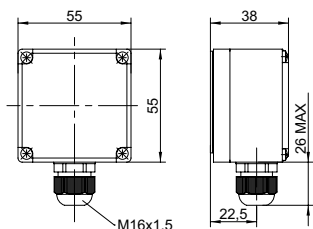
## MOUNTING BRACKET



### MOUNTING BRACKET DATA

Model designation	AMB-090	
Dimensions	mm	90x90

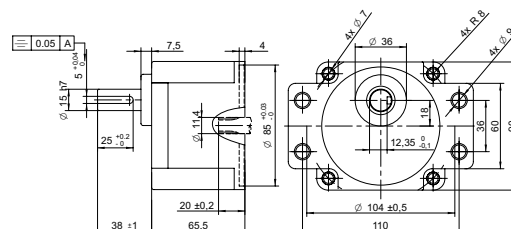
## TERMINAL BOX



### TERMINAL BOX DATA

Model designation See model no. designation to order correct part number.

## GEARBOX FLANGE MOUNTING



### GEARBOX FLANGE MOUNTING DATA

Model designation Contact us for more information.

## NOTES

1. Visit [www.transmotec.com](http://www.transmotec.com) to view datasheets.