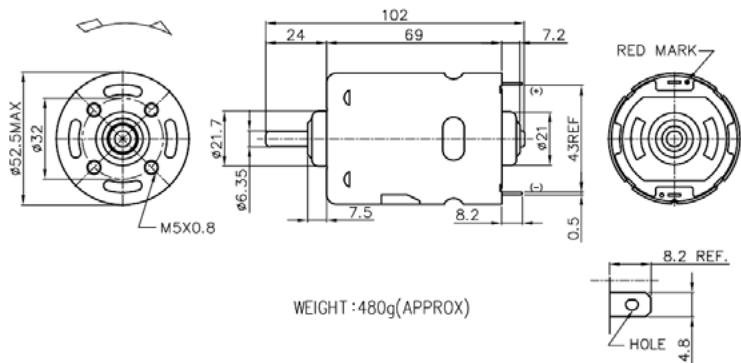


987 series / Ø 52mm / 35 - 112W



Model - -

Carbon brush = C V = Varistor
 Metal brush = M C = Capacitor

MOTOR DATA

Part name	987-5025F-C	987-8012F-C	987-8010F-C	987-5524F-C
Diameter (mm)	52	52	52	52
Length (mm)	69	69	69	69
Nominal voltage (V)	12	12	12	24
Nominal speed (rpm) *	4000	9000	11100	9700
Nominal torque (mNm) *	83.5	113.2	87.5	110.2
Nominal current (A)	4.8	13.1	11.9	6.3
No load speed (rpm)	5050	10800	13100	11000
No load current (A)	1.20	2.00	2.30	0.95
Stall torque (mNm)	417.6	787.3	676.4	857.5
Starting current (A)	20.3	79.6	82.5	44.6
Output (W)	35	107	102	112
Efficiency (%)	63	68	72	74
Operating temperature (°C)	-10..+60	-10..+60	-10..+60	-10..+60

(*) Nominal speed and nominal torque have a tolerance of ± 15%