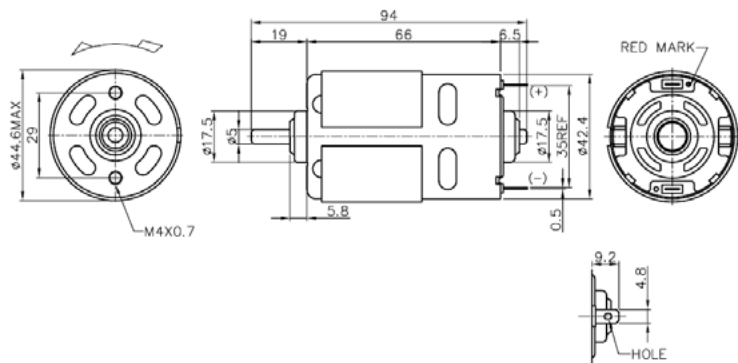


770 series / Ø 45mm / 21 - 114W



Model - -
 Carbon brush = C V = Varistor
 Metal brush = M C = Capacitor

MOTOR DATA				
Part name	770-4087-CC	770-7040-CC	770-8525F-CC	770-32165-CC
Diameter (mm)	45	45	45	45
Length (mm)	66	66	66	66
Nominal voltage (V)	12	12	12	24
Nominal speed (rpm) *	3500	8400	13500	3900
Nominal torque (mNm) *	56.1	59.3	80.3	52.9
Nominal current (A)	2.8	6.0	12.1	1.3
No load speed (rpm)	4550	9700	16000	4650
No load current (A)	0.60	1.30	1.80	0.22
Stall torque (mNm)	334.1	595.7	587.9	397.1
Starting current (A)	14.1	56.9	83.0	8.6
Output (W)	21	53	114	22
Efficiency (%)	63	73	79	74
Operating temperature (°C)	-10..+60	-10..+60	-10..+60	-10..+60

(*) Nominal speed and nominal torque have a tolerance of ± 15%