



# LATCHING SOLENOIDS | Push type

Transmotec sell a broad range of high quality solenoids in standard and customized configurations. Transmotec is the ideal supplier source especially to instrument and apparatus builders. We keep a high number of motors in stock for immediate delivery.

## Customizations include:

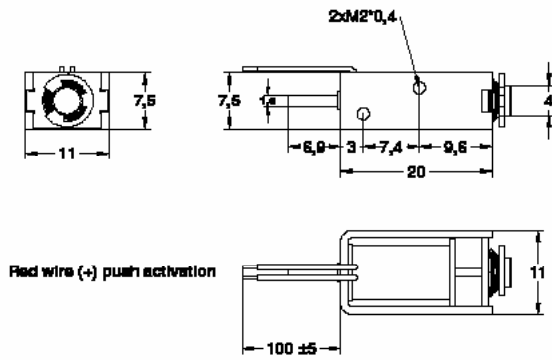
- ✓ Customized harness
- ✓ Winding configuration
- ✓ Plunger configuration
- ✓ And more...

# TABLE OF CONTENTS

Model	Length	Width	Height	Page
K0420S	20	7,5	11	<a href="#">1</a>
K0520S	20	13	16	<a href="#">2</a>
K0625S	25	13	15	<a href="#">3</a>
K0730S	31	16	14	<a href="#">4</a>
K1037S	37	20	26	<a href="#">5</a>
K1240S	40	24	29	<a href="#">6</a>
K1253S	53,5	27	30	<a href="#">7</a>

# K0420S (latching push type)

## DRAWING (mm)



## PHOTO



## MODEL NO. DESIGNATION

K0420S - VOLTAGE

Example: K0420S-12V

## SOLENOID DATA

Duty cycle / ED (%) ▶	Continuous (100%)	Intermittent (50%)	Intermittent (25%)	Intermittent (10%)
Watts @ 20°C ▶	1	2	4	10
Maximum time in energized state (in seconds) ▶	∞	18	12	4

Part ▼	Resistance (20°C) ± 10% (Ω) ▼	DC Volts (V) ▼			
K0420S-06V	36	6	8.5	12	19
K0420S-12V	144	12	17	24	38
K0420S-24V	576	24	34	48	76

## SOLENOID FEATURES AND STANDARD DATA

	STANDARD	CUSTOMIZATION OPTIONS
Type	Push type latching DC solenoid	
Cable	Flying wire 230mm	Length, type and connector
Voltage	3 to 24 VDC @ 100% ED	Other voltages upon request
Life time	At least 500.000 single strokes	
Plunger material	Carbon steel 12L14	
Protection class	IP00	
Insulation grade	B	
Operating temperature	-5°C ... +40°C	
Manufacturing quality standards	ISO9001:2008, ISO/TS 16949:2002	
RoHS compliance	Yes	
CE approval	No	
UL approval	No	

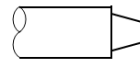
## ADDITIONAL DATA

Holding force, permanent magnet	100g
Weight	10g
Return spring	Yes

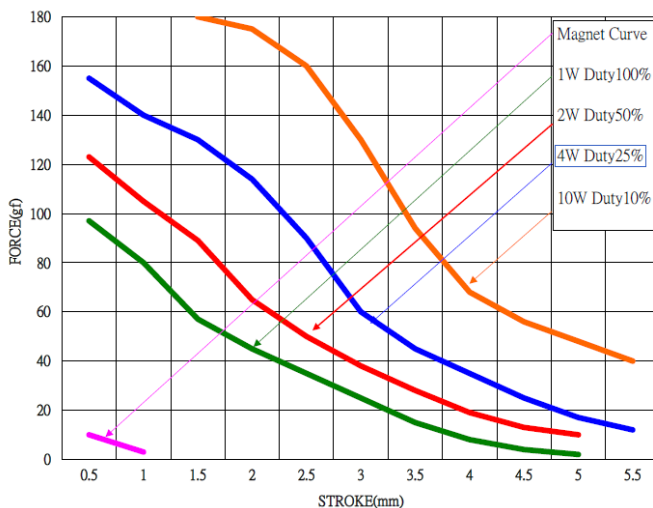
## SPRING DATA

Loading force @ 3mm compression	18g
---------------------------------	-----

## PLUNGER PROFILE

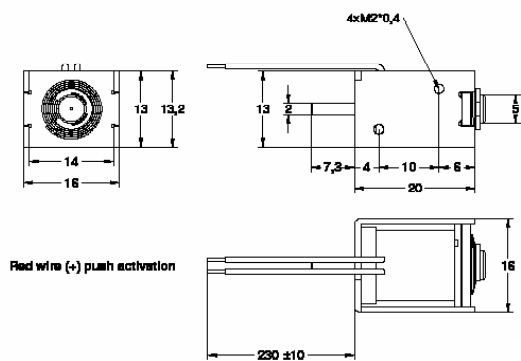


## DIAGRAM



# K0520S (latching push type)

## DRAWING (mm)



## PHOTO



## MODEL NO. DESIGNATION

K0520S - VOLTAGE

Example: K0520S-12V

## SOLENOID DATA

Duty cycle / ED (%) ▶	Continuous (100%)	Intermittent (50%)	Intermittent (25%)	Intermittent (10%)
Watts @ 20°C ▶	1.5	3	6	15
Maximum time in energized state (in seconds) ▶	∞	18	12	4

Part ▼	Resistance (20°C) ± 10% (Ω) ▼	DC Volts (V) ▼			
K0520S-06V	12	4.2	6	8.5	13.4
K0520S-12V	48	8.5	12	17	26.8
K0520S-24V	192	17	24	34	53.6

## SOLENOID FEATURES AND STANDARD DATA

	STANDARD	CUSTOMIZATION OPTIONS
Type	Push type latching DC solenoid	
Cable	Flying wire 230mm	Length, type and connector
Voltage	6 to 24 VDC @ 100% ED	Other voltages upon request
Life time	At least 500.000 single strokes	
Plunger material	Carbon steel 12L14	
Protection class	IP00	
Insulation grade	B	
Operating temperature	-5°C ... +40°C	
Manufacturing quality standards	ISO9001:2008, ISO/TS 16949:2002	
RoHS compliance	Yes	
CE approval	No	
UL approval	No	

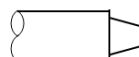
## ADDITIONAL DATA

Holding force, permanent magnet	200g
Weight	20g
Return spring	Yes

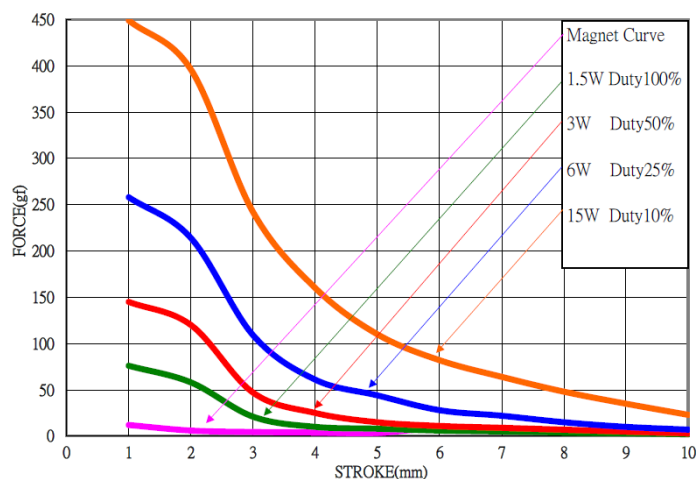
## SPRING DATA

Loading force @ 3mm compression	18g
---------------------------------	-----

## PLUNGER PROFILE

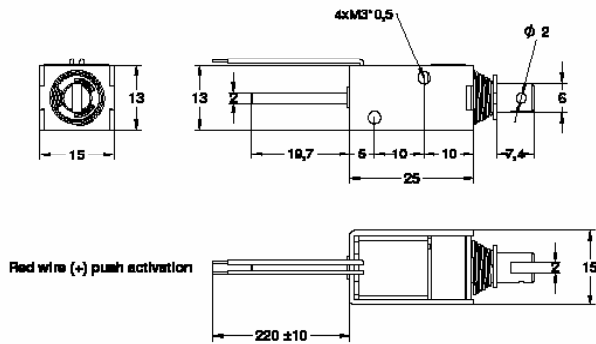


## DIAGRAM



# K0625S (latching push type)

## DRAWING (mm)



## PHOTO



## MODEL NO. DESIGNATION

K0625S - VOLTAGE  
Example: K0625S-12V

## SOLENOID DATA

Duty cycle / ED (%) ▶	Continuous (100%)	Intermittent (50%)	Intermittent (25%)	Intermittent (10%)	
Watts @ 20°C ▶	2.5	5	10	25	
Maximum time in energized state (in seconds) ▶	∞	60	34	7	
Part ▼	Resistance (20°C) ± 10% (Ω) ▼	DC Volts (V) ▼			
K0625S-06V	7.2	4.2	6	8.5	13.4
K0625S-12V	28.8	8.5	12	17	26.8
K0625S-24V	115	17	24	34	53.6

## SOLENOID FEATURES AND STANDARD DATA

	STANDARD	CUSTOMIZATION OPTIONS
Type	Push type latching DC solenoid	
Cable	Flying wire 230mm	Length, type and connector
Voltage	6 to 24 VDC @ 100% ED	Other voltages upon request
Life time	At least 500.000 single strokes	
Plunger material	Carbon steel 12L14	
Protection class	IP00	
Insulation grade	B	
Operating temperature	-5°C ... +40°C	
Manufacturing quality standards	ISO9001:2008, ISO/TS 16949:2002	
RoHS compliance	Yes	
CE approval	No	
UL approval	No	

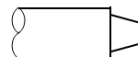
## ADDITIONAL DATA

Holding force, permanent magnet	300g
Weight	26g
Return spring	Yes

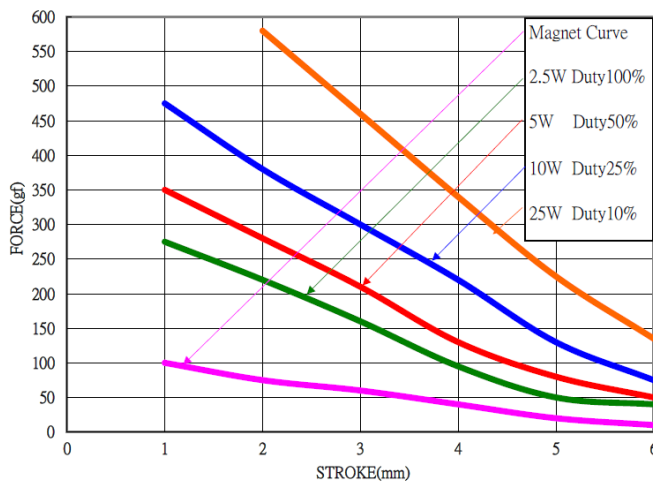
## SPRING DATA

Loading force @ 1mm compression	30g
---------------------------------	-----

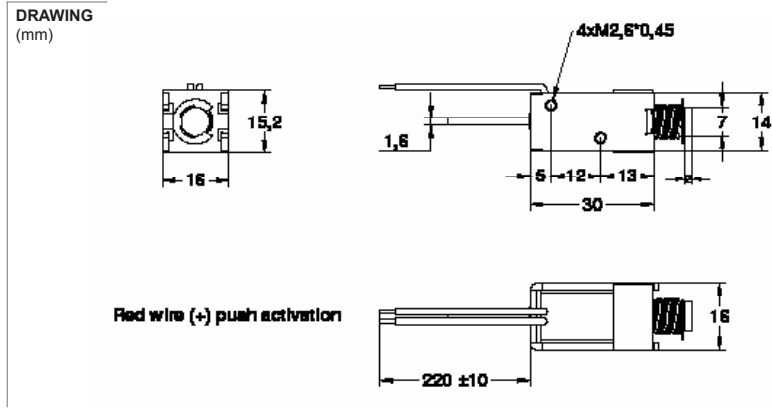
## PLUNGER PROFILE



## DIAGRAM



# K0730S (latching push type)



**MODEL NO. DESIGNATION**

K0730S - VOLTAGE

Example: K0730S-12V

SOLENOID DATA					
Duty cycle / ED (%) ▶	Continuous (100%)	Intermittent (50%)	Intermittent (25%)	Intermittent (10%)	
Watts @ 20°C ▶	3	6	12	30	
Maximum time in energized state (in seconds) ▶	∞	50	25	8	
Part ▼	Resistance (20°C) ± 10% (Ω) ▼	DC Volts (V) ▼			
K0730S-06V	6	4.2	6	8.5	13.4
K0730S-12V	24	8.5	12	17	26.8
K0730S-24V	96	17	24	34	53.7

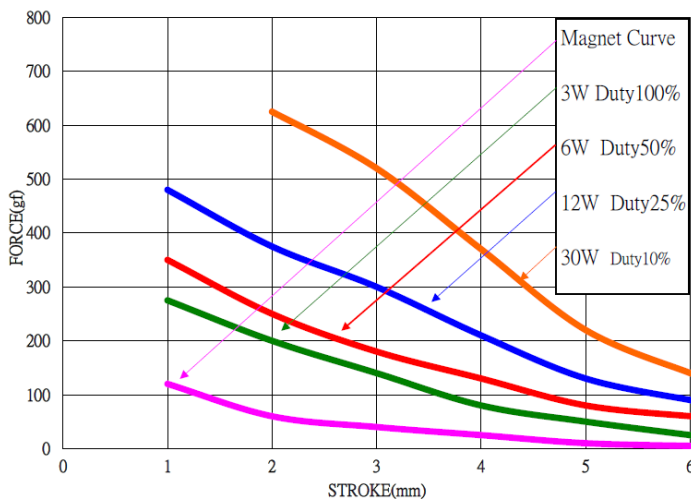
SOLENOID FEATURES AND STANDARD DATA		
	STANDARD	CUSTOMIZATION OPTIONS
Type	Push type latching DC solenoid	
Cable	Flying wire 230mm	Length, type and connector
Voltage	6 to 24 VDC @ 100% ED	Other voltages upon request
Life time	At least 500.000 single strokes	
Plunger material	Carbon steel 12L14	
Protection class	IP00	
Insulation grade	B	
Operating temperature	-5°C ... +40°C	
Manufacturing quality standards	ISO9001:2008, ISO/TS 16949:2002	
RoHS compliance	Yes	
CE approval	No	
UL approval	No	

ADDITIONAL DATA	
Holding force, permanent magnet	500g
Weight	35g
Return spring	Yes

SPRING DATA	
Loading force @ 1mm compression	93 ± 5g

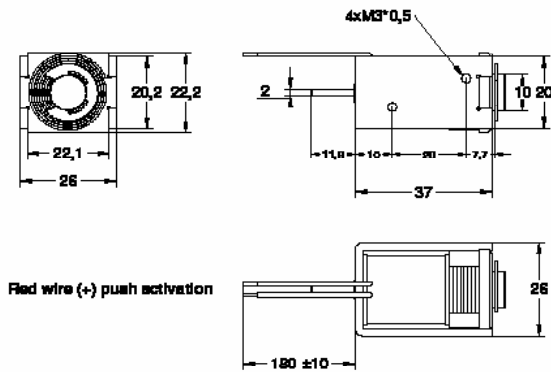


**DIAGRAM**

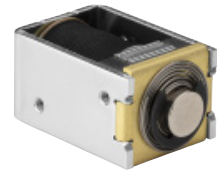


# K1037S (latching push type)

## DRAWING (mm)



## PHOTO



## MODEL NO. DESIGNATION

K1037S - VOLTAGE

Example: K1037S-12V

## SOLENOID DATA

Duty cycle / ED (%) ▶	Continuous (100%)	Intermittent (50%)	Intermittent (25%)	Intermittent (10%)
Watts @ 20°C ▶	4	8	16	40
Maximum time in energized state (in seconds) ▶	∞	160	90	30

Part ▼	Resistance (20°C) ± 10% (Ω) ▼	DC Volts (V) ▼			
K1037S-06V	4.5	4.2	6	8.5	13.4
K1037S-12V	18	8.5	12	17	26.8
K1037S-24V	72	17	24	34	53.7

## SOLENOID FEATURES AND STANDARD DATA

	STANDARD	CUSTOMIZATION OPTIONS
Type	Push type latching DC solenoid	
Cable	Flying wire 230mm	Length, type and connector
Voltage	6 to 24 VDC @ 100% ED	Other voltages upon request
Life time	At least 500.000 single strokes	
Plunger material	Carbon steel 12L14	
Protection class	IP00	
Insulation grade	B	
Operating temperature	-5°C ... +40°C	
Manufacturing quality standards	ISO9001:2008, ISO/TS 16949:2002	
RoHS compliance	Yes	
CE approval	No	
UL approval	No	

## ADDITIONAL DATA

Holding force, permanent magnet	2000g
Weight	95g
Return spring	Yes

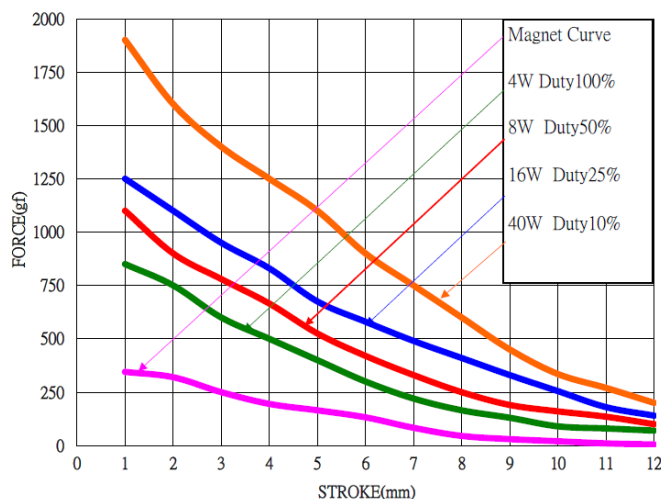
## SPRING DATA

Loading force @ 10mm compression	73g
----------------------------------	-----

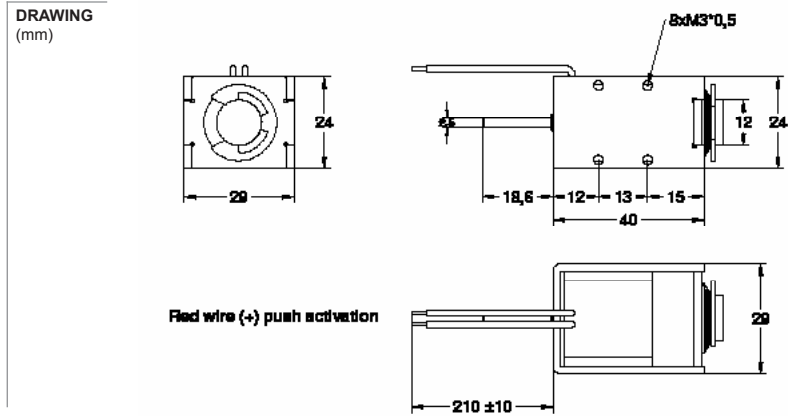
## PLUNGER PROFILE



## DIAGRAM



# K1240S (latching push type)



**MODEL NO. DESIGNATION**

K1240S - VOLTAGE

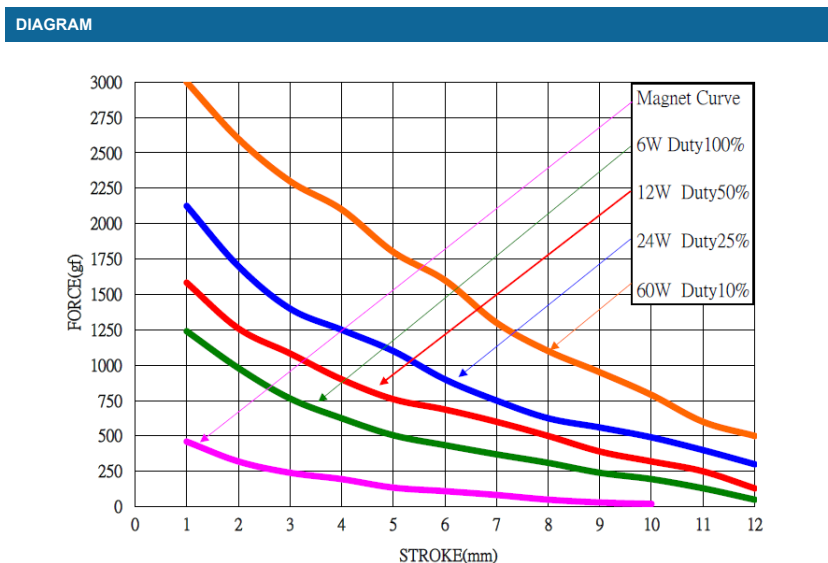
Example: K1240S-12V

SOLENOID DATA					
Duty cycle / ED (%) ▶	Continuous (100%)	Intermittent (50%)	Intermittent (25%)	Intermittent (10%)	
Watts @ 20°C ▶	6	12	24	60	
Maximum time in energized state (in seconds) ▶	∞	60	30	10	
Part ▼	Resistance (20°C) ± 10% (Ω) ▼	DC Volts (V) ▼			
K1240S-06V	3	4.2	6	8.5	13.4
K1240S-12V	12	8.5	12	17	26.8
K1240S-24V	48	17	24	34	53.7

SOLENOID FEATURES AND STANDARD DATA		
	STANDARD	CUSTOMIZATION OPTIONS
Type	Push type latching DC solenoid	
Cable	Flying wire 230mm	Length, type and connector
Voltage	6 to 24 VDC @ 100% ED	Other voltages upon request
Life time	At least 500.000 single strokes	
Plunger material	Carbon steel 12L14	
Protection class	IP00	
Insulation grade	B	
Operating temperature	-5°C ... +40°C	
Manufacturing quality standards	ISO9001:2008, ISO/TS 16949:2002	
RoHS compliance	Yes	
CE approval	No	
UL approval	No	

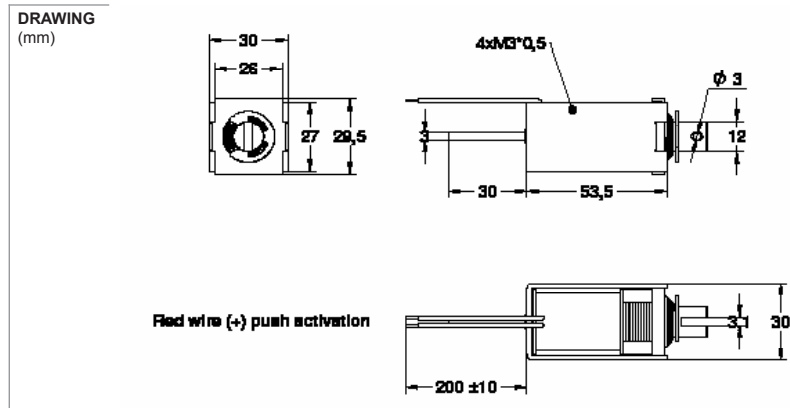
ADDITIONAL DATA	
Holding force, permanent magnet	2200g
Weight	145g
Return spring	Yes

SPRING DATA	
Loading force @ 5mm compression	60g





# K1253S (latching push type)



**PHOTO**



**MODEL NO. DESIGNATION**

K1253S - VOLTAGE  
 Example: K1253S-12V

SOLENOID DATA					
Duty cycle / ED (%) ▶		Continuous (100%)	Intermittent (50%)	Intermittent (25%)	Intermittent (10%)
Watts @ 20°C ▶		8	16	32	80
Maximum time in energized state (in seconds) ▶		∞	100	50	15
Part ▼	Resistance (20°C) ± 10% (Ω) ▼	DC Volts (V) ▼			
K1253S-06V	4.5	4.2	6	8.5	13.4
K1253S-12V	18	8.5	12	17	26.8
K1253S-24V	72	17	24	34	53.7

SOLENOID FEATURES AND STANDARD DATA		
	STANDARD	CUSTOMIZATION OPTIONS
Type	Push type latching DC solenoid	
Cable	Flying wire 230mm	Length, type and connector
Voltage	6 to 24 VDC @ 100% ED	Other voltages upon request
Life time	At least 500.000 single strokes	
Plunger material	Carbon steel 12L14	
Protection class	IP00	
Insulation grade	B	
Operating temperature	-5°C ... +40°C	
Manufacturing quality standards	ISO9001:2008, ISO/TS 16949:2002	
RoHS compliance	Yes	
CE approval	No	
UL approval	No	

ADDITIONAL DATA	
Holding force, permanent magnet	2500g
Weight	225g
Return spring	Yes

SPRING DATA	
Loading force @ 10mm compression	260g



**DIAGRAM**

