

DC WORM GEAR MOTORS | Ø 24.4 - 42.4 mm 14 - 390 Nm

We offer a broad range of high quality DC worm gear motors in standard and customized configurations. Our customer-centric approach makes us the ideal supplier for your project, especially to instrument and apparatus builders. In addition, we offer immediate delivery, thanks to always having a high number of motors in stock.

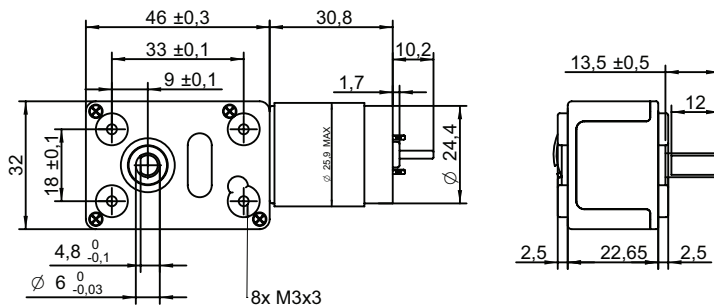
Customizations include:

- ✓ Customized harness
- ✓ Winding configuration
- ✓ Shaft configuration
- ✓ And more...

TABLE OF CONTENTS

MODEL	DIAMETER mm	LENGTH mm	VOLTAGE V	SPEED rpm	TORQUE Ncm	PAGE
WRD3231	24.4	77	12 24	5 - 56	14 - 59	1
WRD4057	36	117	12 24	5 - 100	20 - 200	2
WRD5065	40	143	12 24	4 - 76	34 - 390	3
WRD5066	42.4	146	12 24	4 - 78	55 - 390	4

DRAWING (mm)



PHOTO



MODEL NO. DESIGNATION

WRD3231 - VOLTAGE - GEAR RATIO

Example: WRD3231-12-75

OPTIONS POWER SUPPLIES



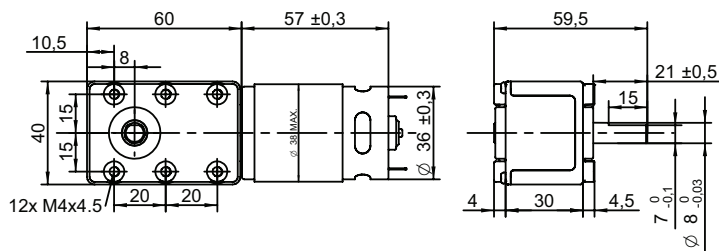
● C = Customizations are offered on demand even for smaller quantities. Typical customizations indicated with green dot at column end. Please contact us for any customization request.

DC MOTOR DATA		12 V	24 V
Nominal voltage	V	12	24
No load current	A	0.06	0.03
Nominal current	A	0.24	0.14
No load speed	rpm	4900	4900
Nominal speed	rpm	4200	4200
Nominal torque	Ncm	5.4	5.4
Nominal power	W	2.4	2.4
Service life	hrs	300	300

GEAR MOTOR DATA 12V									
Gear ratio		75:1	100:1	200:1	300:1	500:1	700:1	900:1	1012:1
Nominal torque	Ncm	14	19	37	54	59	59	59	59
Nominal speed	rpm	56	42	21	14	9	7	5	5
Mechanical power	W	0.82	0.84	0.80	0.79	0.55	0.40	0.32	0.28
Weight	g	180	180	180	180	180	180	180	180
Rotation direction		CW				CCW			

GEAR MOTOR DATA 24V									
Gear ratio		75:1	100:1	200:1	300:1	500:1	700:1	900:1	1012:1
Nominal torque	Ncm	0.1	0.2	0.4	0.5	0.6	0.6	0.6	0.6
Nominal speed	rpm	56	42	21	14	9	7	5	5
Mechanical power	W	0.82	0.84	0.80	0.79	0.55	0.40	0.32	0.28
Weight	g	180	180	180	180	180	180	180	180
Rotation direction		CW				CCW			

DRAWING (mm)



PHOTO

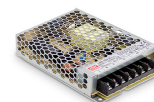


MODEL NO. DESIGNATION

WRD4057 - VOLTAGE - GEAR RATIO

Example: WRD4057-12-75

OPTIONS POWER SUPPLIES



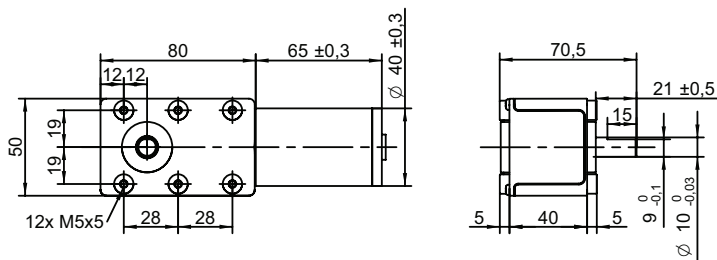
● C = Customizations are offered on demand even for smaller quantities. Typical customizations indicated with green dot at column end. Please contact us for any customization request.

DC MOTOR DATA		12 V	24 V
Nominal voltage	V	12	24
No load current	A	0.3	0.16
Nominal current	A	1.6	1.2
No load speed	rpm	6000	5200
Nominal speed	rpm	6000	5200
Nominal torque	Ncm	2	2.8
Nominal power	W	11	15
Service life	hrs	300	300

GEAR MOTOR DATA 12V										
Gear ratio		50:1	75:1	100:1	150:1	200:1	350:1	600:1	700:1	1050:1
Nominal torque	Ncm	20	29	39	59	78	98	200	200	200
Nominal speed	rpm	100	69	52	35	26	15	9	7	5
Mechanical power	W	2.1	2.1	2.1	2.1	2.1	1.5	1.8	1.6	1.0
Weight	g	440	440	440	440	440	440	440	440	440
Rotation direction		CW						CCW		

GEAR MOTOR DATA 24V										
Gear ratio		50:1	75:1	100:1	150:1	200:1	350:1	600:1	700:1	1050:1
Nominal torque	Ncm	28	41	56	83	98	98	200	200	200
Nominal speed	rpm	100	68	51	34	26	15	9	7	5
Mechanical power	W	2.9	2.9	3.0	3.0	2.6	1.5	1.8	1.5	1.0
Weight	g	440	440	440	440	440	440	440	440	440
Rotation direction		CW						CCW		

DRAWING (mm)



PHOTO

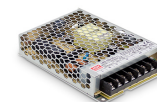


MODEL NO. DESIGNATION

WRD5065 - VOLTAGE - GEAR RATIO

Example: WRD5065-12-50

OPTIONS POWER SUPPLIES



● C = Customizations are offered on demand even for smaller quantities. Typical customizations indicated with green dot at column end. Please contact us for any customization request.

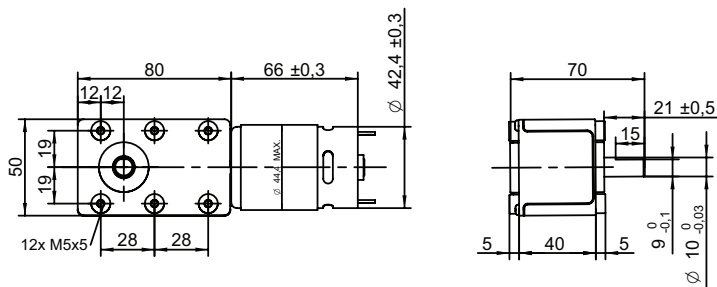
DC MOTOR DATA		12 V	24 V
Nominal voltage	V	12	24
No load current	A	0.5	0.22
Nominal current	A	2	0.82
No load speed	rpm	4500	4500
Nominal speed	rpm	3800	3800
Nominal torque	Ncm	4.2	3.4
Nominal power	W	17	14
Service life	hrs	300	300

UL	AWG	Length mm	Color positive terminal +	Color negative terminal -
1430	20	150 ± 10	Red	Black

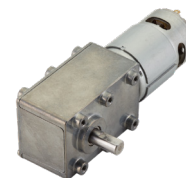
GEAR MOTOR DATA 12V										
Gear ratio		50:1	75:1	100:1	120:1	200:1	350:1	600:1	700:1	1050:1
Nominal torque	Ncm	42	63	84	100	170	290	390	390	390
Nominal speed	rpm	75	50	38	31	19	11	6	5	4
Mechanical power	W	3.3	3.3	3.3	3.3	3.4	3.3	2.6	2.2	1.5
Weight	g	760	760	760	760	760	760	790	790	790
Rotation direction		CW						CCW		

GEAR MOTOR DATA 24V										
Gear ratio		50:1	75:1	100:1	120:1	200:1	350:1	600:1	700:1	1050:1
Nominal torque	Ncm	34	51	69	82	140	240	390	390	390
Nominal speed	rpm	76	51	38	32	19	11	6	5	4
Mechanical power	W	2.7	2.7	2.8	2.7	2.8	2.7	2.6	2.2	1.5
Weight	g	760	760	760	760	760	760	790	790	790
Rotation direction		CW						CCW		

DRAWING (mm)



PHOTO



MODEL NO. DESIGNATION

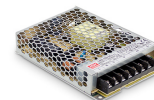
WRD5066

- VOLTAGE

- GEAR RATIO

Example: WRD5066-12-50

OPTIONS POWER SUPPLIES



● C = Customizations are offered on demand even for smaller quantities. Typical customizations indicated with green dot at column end. Please contact us for any customization request.

DC MOTOR DATA		12 V	24 V
Nominal voltage	V	12	24
No load current	A	0.65	0.3
Nominal current	A	2.8	1.3
No load speed	rpm	4600	4600
Nominal speed	rpm	3900	3900
Nominal torque	Ncm	6	5.5
Nominal power	W	24	22
Service life	hrs	300	300

GEAR MOTOR DATA 12V

		50:1	75:1	100:1	120:1	200:1	350:1	600:1	700:1	1050:1
Gear ratio		50:1	75:1	100:1	120:1	200:1	350:1	600:1	700:1	1050:1
Nominal torque	Ncm	60	89	120	140	240	290	390	390	390
Nominal speed	rpm	77	51	39	32	19	11	6	6	4
Mechanical power	W	4.9	4.8	4.9	4.7	4.9	3.3	2.6	2.3	1.5
Weight	g	810	810	810	810	810	810	840	840	840
Rotation direction		CW						CCW		

GEAR MOTOR DATA 24V

		50:1	75:1	100:1	120:1	200:1	350:1	600:1	700:1	1050:1
Gear ratio		50:1	75:1	100:1	120:1	200:1	350:1	600:1	700:1	1050:1
Nominal torque	Ncm	55	82	110	130	220	290	390	390	390
Nominal speed	rpm	78	52	39	32	20	11	7	6	4
Mechanical power	W	4.5	4.5	4.5	4.4	4.5	3.4	2.7	2.3	1.5
Weight	g	810	810	810	810	810	810	840	840	840
Rotation direction		CW						CCW		