



Planetary Gear DC Motors 25W - 500W General catalogue

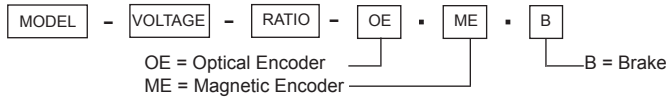
TABLE OF CONTENTS

	60mm	77mm	103mm	119mm
Ø43	PDS4360 P.4	PDS4377 P.5		
Ø53			PD52103 P.6	
Ø123				PDS132190 P.7

ENCODER OR BRAKE OPTIONS

This line of our motors and gear motors are also available with optical OE or magnetic encoder ME or electric brake B. Please check our price list and part numbers for the availability of combinations.

MODEL NO. DESIGNATIONS



Example: PDS4460-12-4-OE

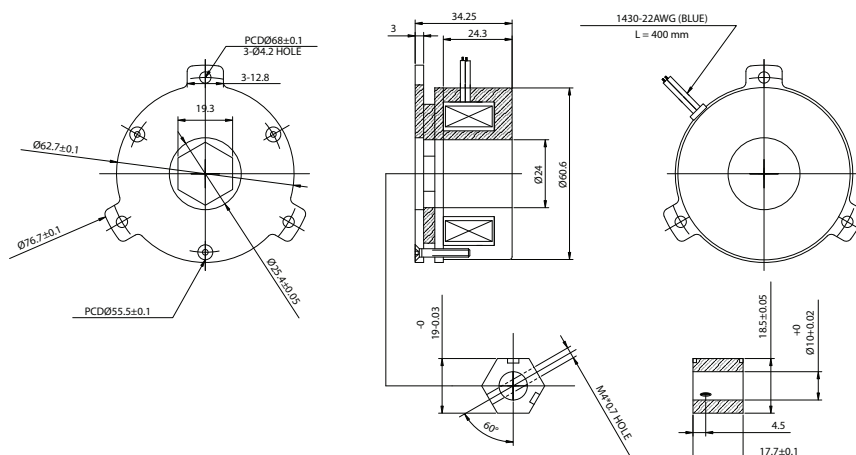
ENCODER DATA

	MAGNETIC		OPTICAL	
Pulses per revolution PPR two channels together	24		1000	
Counts per revolution CPR two channels together	48		2000	
Phase shift	90 degrees		90 degrees	
Vcc	+5 VDC	Orange lead	+5 VDC	Pin 1
GND	0 VDC	Green lead	0 VDC	Pin 5 Pin 8
Signal A		Blue lead		A- Pin 6
Signal B		Yellow lead		B- Pin 7
Current			< 80 mA	
Index	-		Z+ Pin 4	
Output wave			Line driver	
Frequency response			25 KHz max.	
Connector			DB9 female	
Weight			< 100 g	

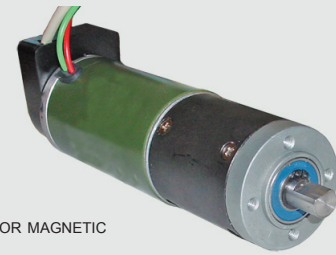
BRAKE DATA

Voltage	24VDC
Power	16W
Impedance	35Ω ±5%
Insulating Level	F
Dynamic Friction	35 KGF-cm
Static Friction	40 KGF-cm
Insulating Impedance	500 VDC / 50 MΩ
Insulating Withstanding Pressure	1500 VAC / 1mA / 1SEC
Releasing Time	40 msec
Attracting Time	140 msec
Operating Voltage	12V
Releasing Voltage	5V
Gap	0.12~0.15 mm
Weight	0.7 kg

BRAKE SPECIFICATIONS



ENCODER

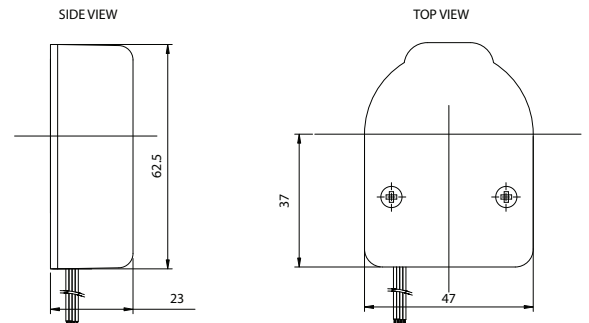


OPTICAL OR MAGNETIC

BRAKE



ENCODER APPEARANCE SIZE



PDS4360 DC PLANETARY GEAR MOTOR

Brush dc motors with robust design and closed motor body. Motor shafts are supported by ball bearings. Configurations may include gearbox, encoder and brake depending on motor model. Please check the part description for proper selections of combination. Customizations are welcome.



TRANSMOTEC SWEDEN AB

MODEL NO. DESIGNATIONS



Example: PDxxxx-12-4

MOTOR FEATURES

- Robust design, closed motor body
- Ball bearings
- Gearbox combinations, metal gears
- Encoder options
- Brake options
- Customizations are welcome

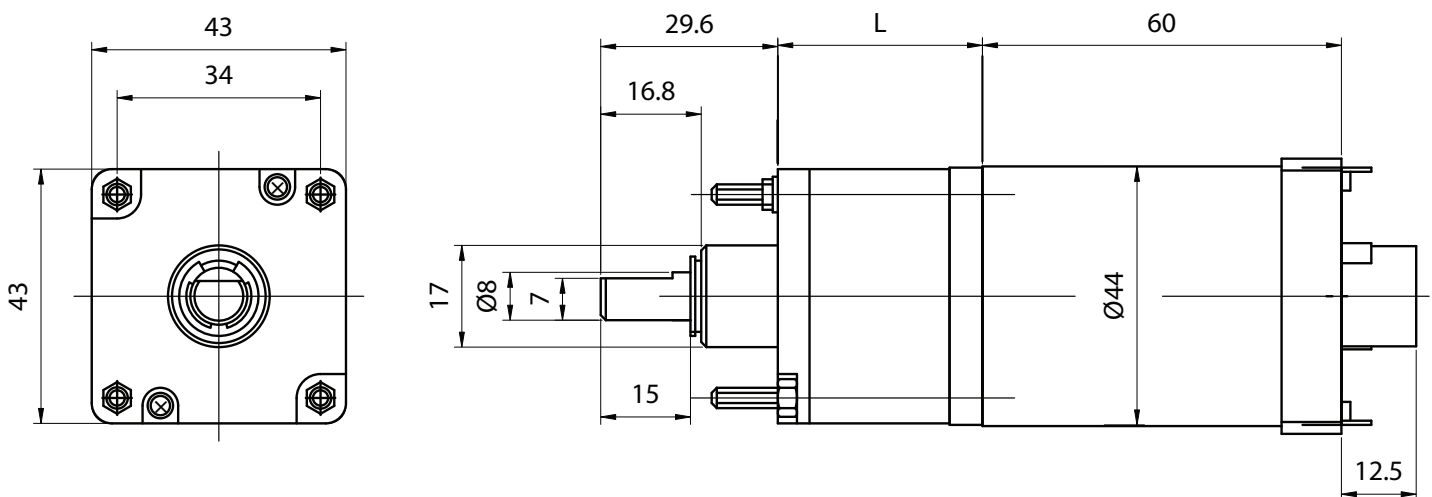
PLANETARY GEAR DATA 12V

Ratio	UNITS	4:1	14:1	24:1	49:1	60:1	84:1	103:1	144:1	171:1	210:1	259:1	294:1	325:1	361:1	443:1	504:1	619:1	864:1
Number of stages		1	2	2	3	3	3	3	3	4	4	4	4	4	4	4	4	4	4
Rated torque	kg-cm	1.7	5.3	10.2	16.6	20.3	28.4	34.9	48.7	51.4	60.0	60.0	60.0	60.0	60.0	60.0	60.0	60.0	60.0
Rated speed	rpm	700	200	117	57	47	33	27.2	19.4	16.4	13.3	10.8	9.5	8.6	7.8	6.3	5.6	4.5	3.2
Rated power	W	16.2	16.2	16.2	16.2	16.2	16.2	16.2	16.2	16.2	16.2	16.2	16.2	16.2	16.2	16.2	16.2	16.2	16.2
Length L	mm	20.2	27.9	27.9	35.7	35.7	35.7	35.7	35.7	43.5	43.5	43.5	43.5	43.5	43.5	43.5	43.5	43.5	43.5
Weight	kg	0.7	0.7	0.7	0.7	0.7	0.7	0.7	0.7	0.7	0.7	0.7	0.7	0.7	0.7	0.7	0.7	0.7	0.7

MOTOR DATA

Rated volt (V)	Rated torque (kg-cm)	Rated speed (rpm)	Rated Current (A)	No load speed (rpm)	No load current (A)	Rated input (W)
12	0.48	2800	2	3600	1.3	24
24	0.47	3300	1.1	4000	0.6	26.4

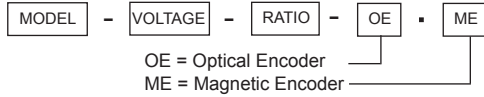
APPEARANCE SIZE



PDS4377 DC PLANETARY GEAR MOTOR

Brush dc motors with robust design and closed motor body. Motor shafts are supported by ball bearings. Configurations may include gearbox, encoder and brake depending on motor model. Please check the part description for proper selections of combination. Customizations are welcome.

MODEL NO. DESIGNATIONS



Example: PDxxxx-12-4-OE

MOTOR FEATURES

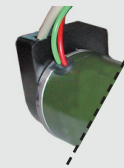
- Robust design, closed motor body
- Ball bearings
- Gearbox combinations, metal gears
- Encoder options
- Brake options
- Customizations are welcome

PDS4377



TRANSMOTEC SWEDEN AB

ENCODER VERSION AVAILABLE



SEE SEPARATE DATA SHEET

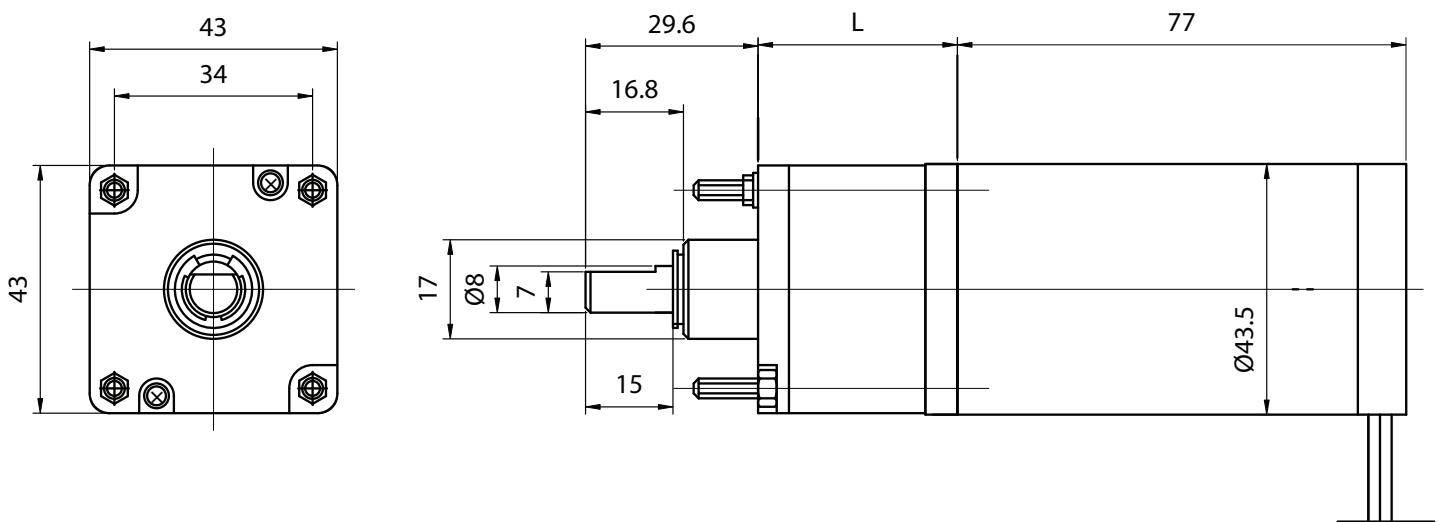
PLANETARY GEAR DATA 12V

Ratio	UNITS	4:1	14:1	24:1	49:1	60:1	84:1	103:1	144:1	171:1	210:1	259:1	294:1	325:1	361:1	443:1	504:1	619:1	864:1
Number of stages		1	2	2	3	3	3	3	3	4	4	4	4	4	4	4	4	4	4
Rated torque	kg-cm	1.7	5.3	10.2	16.6	20.3	28.4	34.9	48.7	51.4	60.0	60.0	60.0	60.0	60.0	60.0	60.0	60.0	60.0
Rated speed	rpm	900	257	150	73	60	43	35	25	21.1	17.1	13.9	12.2	11.1	10.0	8.1	7.1	5.8	4.2
Rated power	W	12	12	12	12	12	12	12	12	12	12	12	12	12	12	12	12	12	12
Length L	mm	20.2	27.9	27.9	35.7	35.7	35.7	35.7	35.7	43.5	43.5	43.5	43.5	43.5	43.5	43.5	43.5	43.5	43.5
Weight	kg	0.7	0.7	0.7	0.7	0.7	0.7	0.7	0.7	0.7	0.7	0.7	0.7	0.7	0.7	0.7	0.7	0.7	0.7

MOTOR DATA

Rated volt (V)	Rated torque (kg-cm)	Rated speed (rpm)	Rated Current (A)	No load speed (rpm)	No load current (A)	Rated input (W)
12	0.48	3600	2.9	4900	1.4	34.8
24	0.5	3300	1.3	4800	0.8	31.2

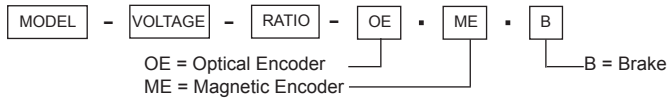
APPEARANCE SIZE



PDS132190 DC PLANETARY GEAR MOTOR

Brush dc motors with robust design and closed motor body. Motor shafts are supported by ball bearings. Configurations may include gearbox, encoder and brake depending on motor model. Please check the part description for proper selections of combination. Customizations are welcome.

MODEL NO. DESIGNATIONS



Example: PDxxx-12-4-OE

MOTOR FEATURES

- Robust design, closed motor body
- Ball bearings
- Gearbox combinations
- Encoder options
- Brake options
- Customizations are welcome

PDS132190

ENCODER AND BRAKE VERSION AVAILABLE

SEE SEPARATE DATA SHEET

PLANETARY GEAR DATA 24V

Ratio	UNITS	7.75:1	10:1
Number of stages		1	1
Rated torque	kg-cm	144.9	187
Rated speed	rpm	252	195
Rated power	W	420	420
Length L	mm	97	97
Weight	kg	9	9

MOTOR DATA

Rated volt (V)	Rated torque (kg-cm)	Rated speed (rpm)	Rated Current (A)	No load speed (rpm)	No load current (A)	Rated input (W)
12	14.9	1500	26	1800	6	320
24	20.3	2020	23	2400	3.2	552

APPEARANCE SIZE

