



## DC Motors 25W-500W General catalogue

## TABLE OF CONTENTS

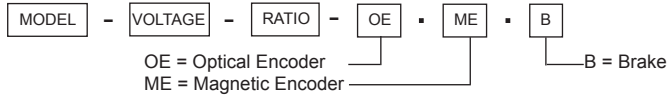
Tip: You can click the page numbers to enter the page they refer to

Length Diameter	70-90mm	90-100mm	100-120mm	120-150mm	150-200mm
Ø 43	D4385 <a href="#">P.4</a> D4387 <a href="#">P.5</a>				
Ø 54			D54103 <a href="#">P.6</a>		
Ø 64			D64108 <a href="#">P.7</a>		
Ø 80		D8095 <a href="#">P.8</a>			
Ø 100	D10079 <a href="#">P.9</a>				
Ø 109				D109141 <a href="#">P.10</a>	D109175 <a href="#">P.11</a>
Ø 123					D123182 <a href="#">P.12</a>

## ENCODER OR BRAKE OPTIONS

This line of our motors and gear motors are also available with optical OE or magnetic encoder ME or electric brake B. Please check our price list and part numbers for the availability of combinations.

### MODEL NO. DESIGNATIONS



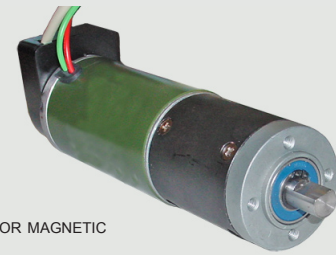
### ENCODER DATA

	MAGNETIC		OPTICAL	
Pulses per revolution PPR two channels together	24		1000	
Counts per revolution CPR two channels together	48		2000	
Phase shift	90 degrees		90 degrees	
VCC	+5 VDC	Yellow lead	+5 VDC	Pin 1
GND	0 VDC	Green lead	0 VDC	Pin 5 Pin 8
Signal A		Blue lead		A- Pin 6
Signal B		Yellow lead		B- Pin 7
Current			< 80 mA	
Index	-		Z+ Pin 4	
Output wave			Line driver	
Frequency response			25 KHz max.	
Connector			DB9 female	
Weight			< 100 g	

### BRAKE DATA

Voltage	24VDC
Power	16W
Impedance	35Ω ±5%
Insulating Level	F
Dynamic Friction	35 KGF-cm
Static Friction	40 KGF-cm
Insulating Impedance	500 VDC / 50 MΩ
Insulating Withstanding Pressure	1500 VAC / 1mA / 1SEC
Releasing Time	40 msec
Attracting Time	140 msec
Operating Voltage	12V
Releasing Voltage	5V
Gap	0.12~0.15 mm
Weight	0.7 kg

### ENCODER

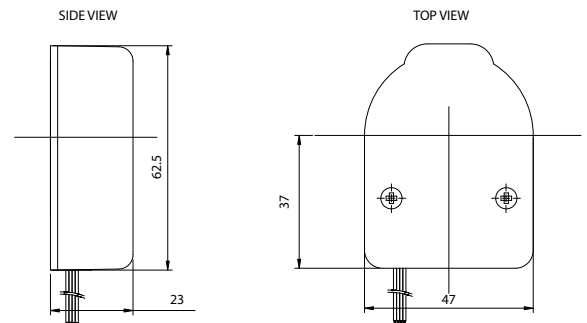


OPTICAL OR MAGNETIC

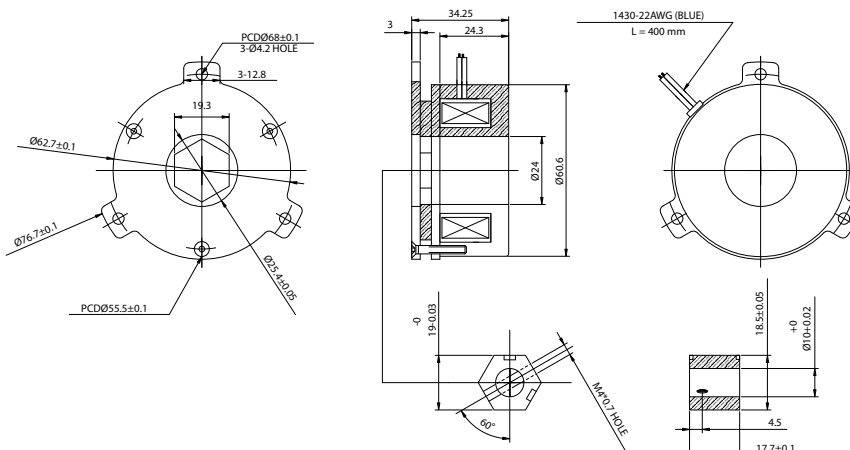
### BRAKE



### ENCODER APPEARANCE SIZE



### BRAKE SPECIFICATIONS



## D4385 DC MOTOR

Brush dc motors with robust design and closed motor body. Motor shafts are supported by ball bearings. Configurations may include gearbox, encoder and brake depending on motor model. Please check the part description for proper selections of combination. Customizations are welcome.



### MODEL NO. DESIGNATIONS

MODEL - VOLTAGE

Example: D4385-12

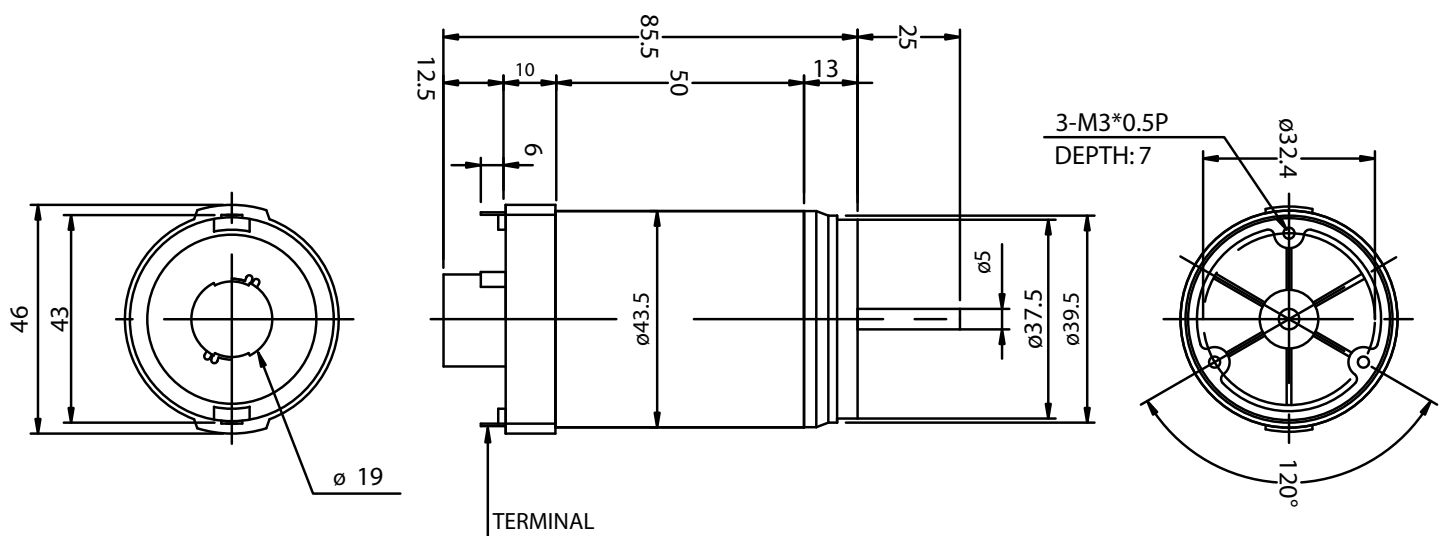
### MOTOR FEATURES

- Robust design, closed motor body
- Ball bearings
- Gearbox combinations
- Encoder options
- Brake options
- Customizations are welcome

### MOTOR DATA

MODEL	NOMINAL VOLTAGE (VDC)	NO LOAD		AT MAX EFFICIENCY					WEIGHT (Kg)
		SPEED (RPM)	CURRENT (A)	SPEED (RPM)	CURRENT (A)	TORQUE (Kg-cm)	WATT (W)	EFF (%)	
D4385-12	12	3600	1.3	2800	2	0.48	24	59	0.32
D4385-24	24	4000	0.6	3300	1.1	0.47	26.4	60	0.32

### APPEARANCE SIZE



## D4387 DC MOTOR

Brush dc motors with robust design and closed motor body. Motor shafts are supported by ball bearings. Configurations may include gearbox, encoder and brake depending on motor model. Please check the part description for proper selections of combination. Customizations are welcome.

TRANSMOTEC SWEDEN AB

**D4387**

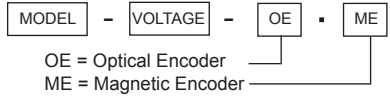


**ENCODER VERSION AVAILABLE**



SEE SEPARATE DATA SHEET

### MODEL NO. DESIGNATIONS



Example: D4387-12-OE

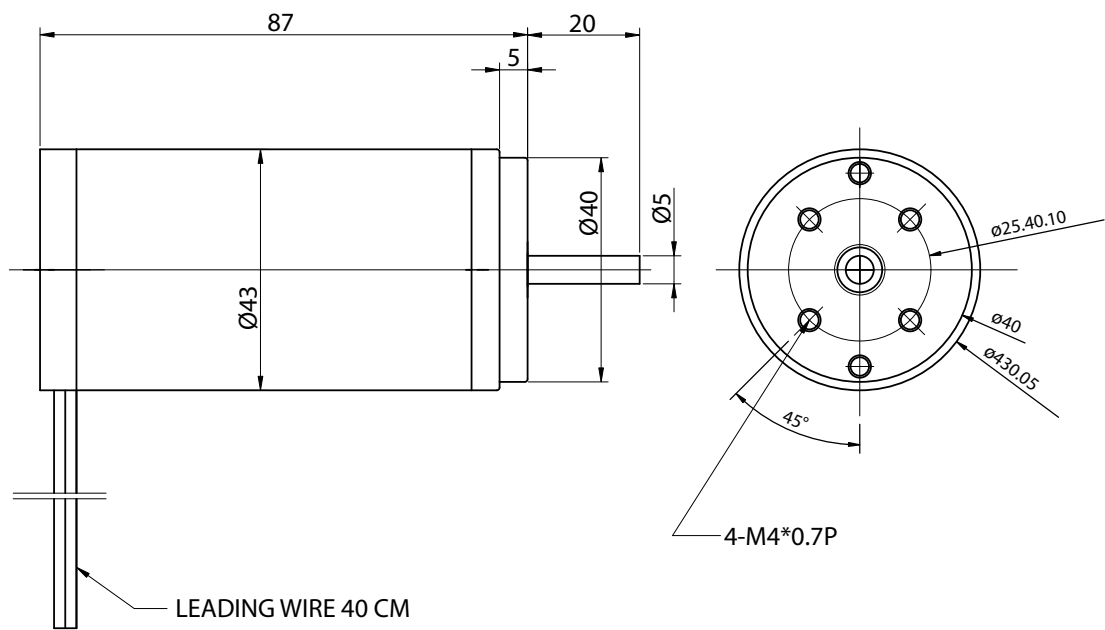
### MOTOR FEATURES

- Robust design, closed motor body
- Ball bearings
- Gearbox combinations
- Encoder options
- Brake options
- Customizations are welcome

### MOTOR DATA

MODEL	NOMINAL VOLTAGE (VDC)	NO LOAD		AT MAX EFFICIENCY					WEIGHT (Kg)
		SPEED (RPM)	CURRENT (A)	SPEED (RPM)	CURRENT (A)	TORQUE (Kg-cm)	WATT (W)	EFF (%)	
D4387-12	12	4900	1.4	3600	2.9	0.48	34.8	59	0.32
D4387-24	24	4800	0.8	3300	1.3	0.5	31.2	62	0.32

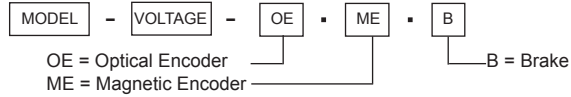
### APPEARANCE SIZE



## D54103 DC MOTOR

Brush dc motors with robust design and closed motor body. Motor shafts are supported by ball bearings. Configurations may include gearbox, encoder and brake depending on motor model. Please check the part description for proper selections of combination. Customizations are welcome.

### MODEL NO. DESIGNATIONS



Example: D54103-12-B

### MOTOR FEATURES

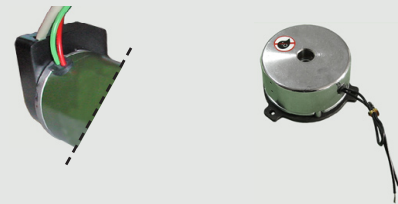
- Robust design, closed motor body
- Ball bearings
- Gearbox combinations
- Encoder options
- Brake options
- Customizations are welcome

### D54103



TRANSMOTEC SWEDEN AB

### ENCODER AND BRAKE VERSION AVAILABLE

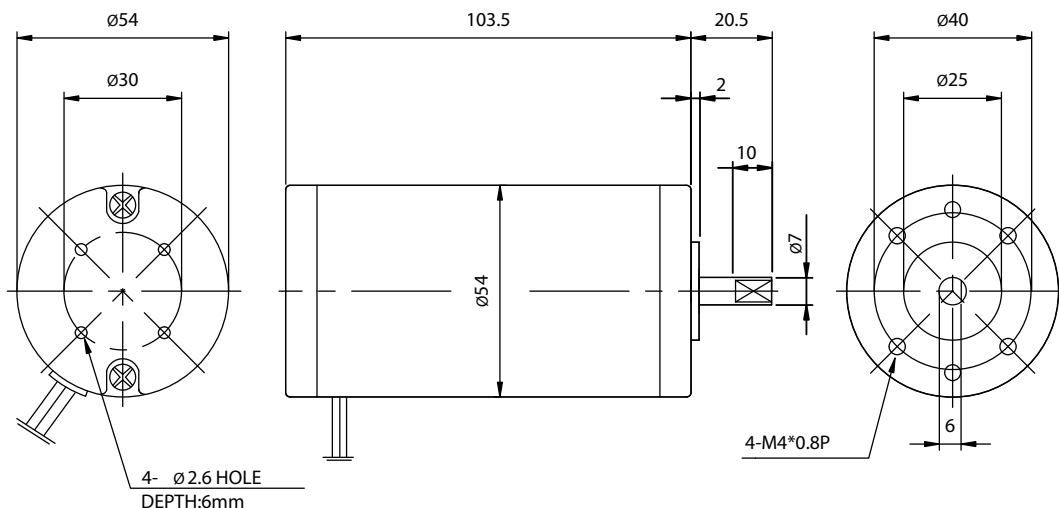


SEE SEPARATE DATA SHEET

### MOTOR DATA

MODEL	NOMINAL VOLTAGE (VDC)	NO LOAD		AT MAX EFFICIENCY					WEIGHT (Kg)
		SPEED (RPM)	CURRENT (A)	SPEED (RPM)	CURRENT (A)	TORQUE (Kg-cm)	WATT (W)	EFF (%)	
D54103-12	12	3600	0.5	3100	3.3	0.9	39.6	70	0.64
D54103-24	24	3600	0.4	3000	2.2	1.2	52.8	75	0.64

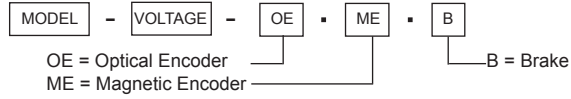
### APPEARANCE SIZE



## D64108 DC MOTOR

Brush dc motors with robust design and closed motor body. Motor shafts are supported by ball bearings. Configurations may include gearbox, encoder and brake depending on motor model. Please check the part description for proper selections of combination. Customizations are welcome.

### MODEL NO. DESIGNATIONS




Example: D64108-12-B

### MOTOR FEATURES



- Robust design, closed motor body
- Ball bearings
- Gearbox combinations
- Encoder options
- Brake options
- Customizations are welcome

TRANSMOTEC SWEDEN AB

**D64108**



**ENCODER AND BRAKE VERSION AVAILABLE**

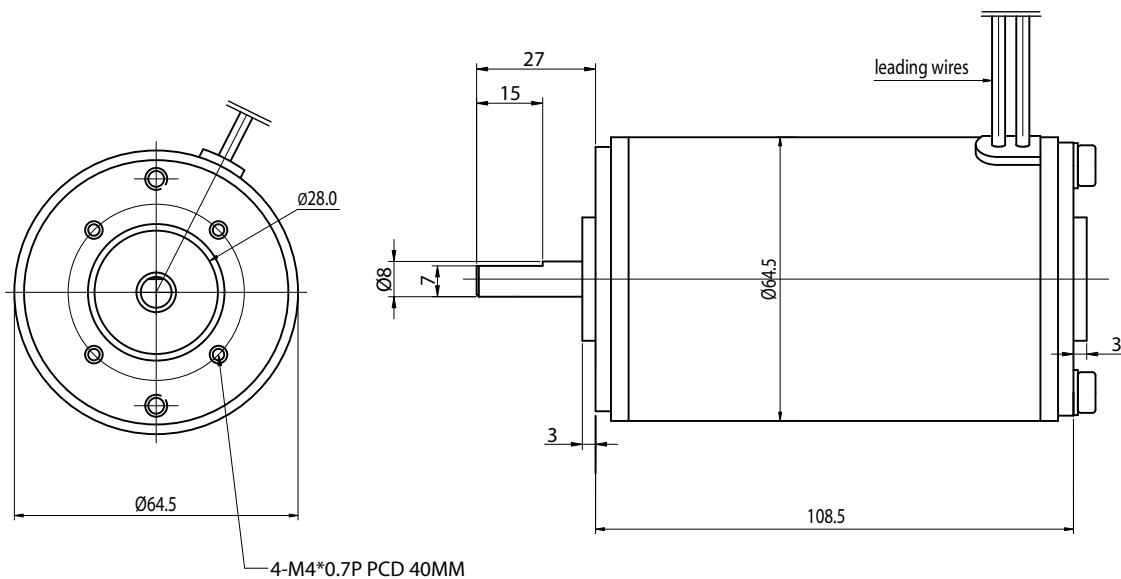



SEE SEPARATE DATA SHEET

### MOTOR DATA

MODEL	NOMINAL VOLTAGE (VDC)	NO LOAD		AT MAX EFFICIENCY					WEIGHT (Kg)
		SPEED (RPM)	CURRENT (A)	SPEED (RPM)	CURRENT (A)	TORQUE (Kg-cm)	WATT (W)	EFF (%)	
D64108-12	12	3000	1.3	2400	5.5	1.9	67	74	0,96
D64108-24	24	3300	0.5	2700	2.3	1.5	73	76	0,96

### APPEARANCE SIZE



## D8095 DC MOTOR

Brush dc motors with robust design and closed motor body. Motor shafts are supported by ball bearings. Configurations may include gearbox, encoder and brake depending on motor model. Please check the part description for proper selections of combination. Customizations are welcome.



TRANSMOTEC SWEDEN AB

### MODEL NO. DESIGNATIONS

MODEL - VOLTAGE

Example: D8095-12

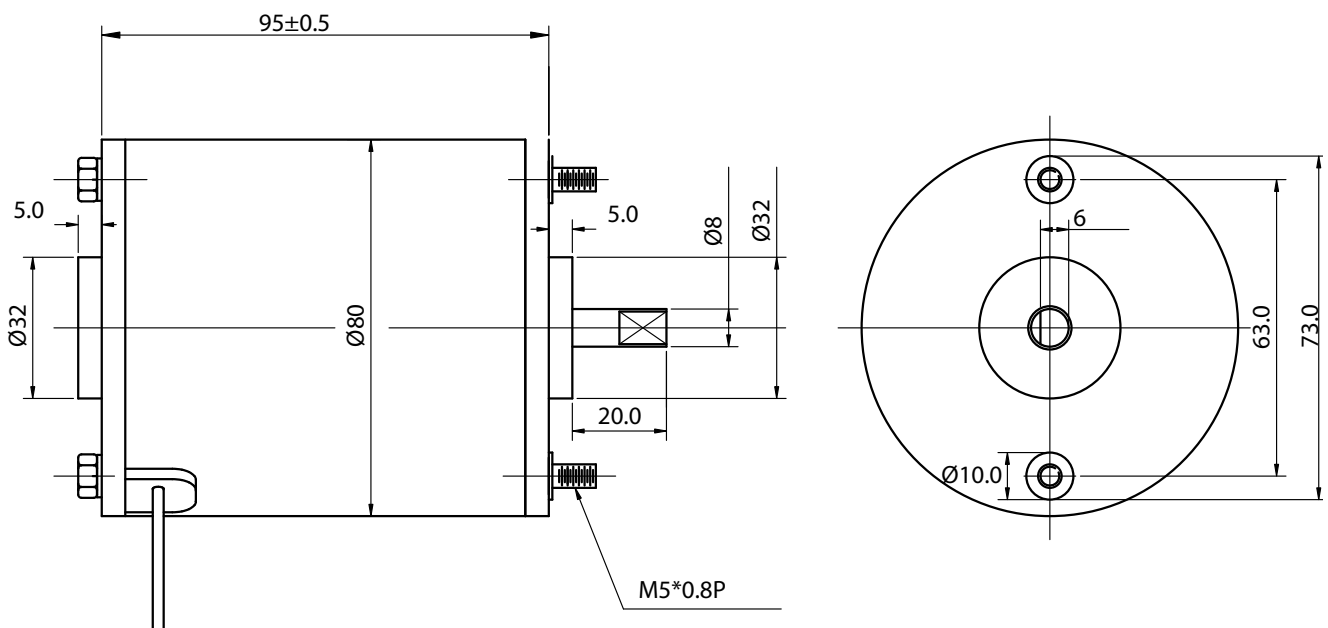
### MOTOR FEATURES

- Robust design, closed motor body
- Ball bearings
- Gearbox combinations
- Encoder options
- Brake options
- Customizations are welcome

### MOTOR DATA

MODEL	NOMINAL VOLTAGE (VDC)	NO LOAD		AT MAX EFFICIENCY					WEIGHT (Kg)
		SPEED (RPM)	CURRENT (A)	SPEED (RPM)	CURRENT (A)	TORQUE (Kg-cm)	WATT (W)	EFF (%)	
D8095-12	12	3100	1.15	2820	5.1	1.7	62	79	1.36
D8095-24	24	3300	0.7	2750	2.8	1.8	66	80	1.36

### APPEARANCE SIZE



## D10079 DC MOTOR

Brush dc motors with robust design and closed motor body. Motor shafts are supported by ball bearings. Configurations may include gearbox, encoder and brake depending on motor model. Please check the part description for proper selections of combination. Customizations are welcome.



### MODEL NO. DESIGNATIONS

MODEL - VOLTAGE

Example: D10079-12

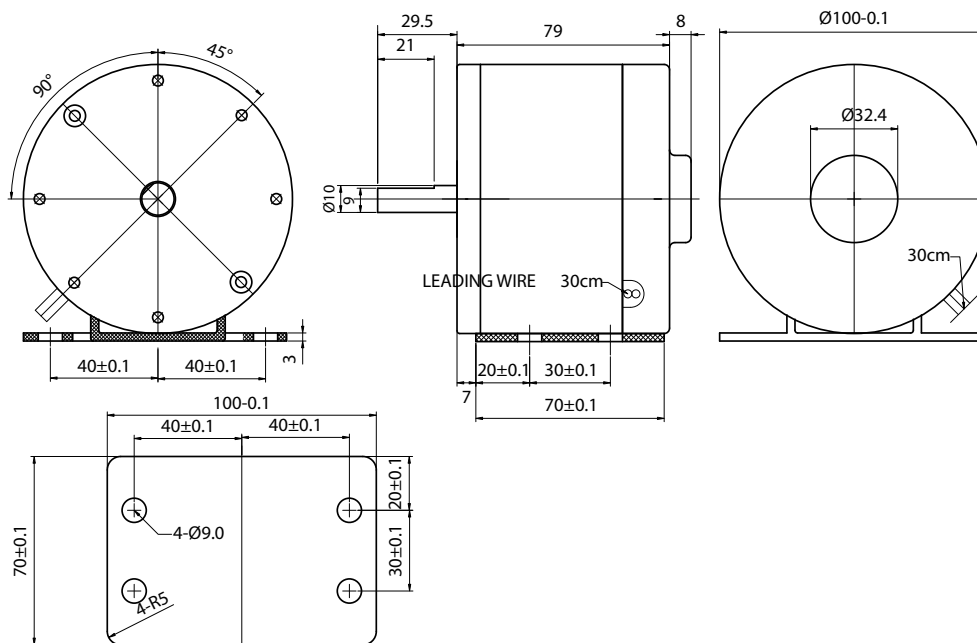
### MOTOR FEATURES

- Robust design, closed motor body
- Ball bearings
- Gearbox combinations
- Encoder options
- Brake options
- Customizations are welcome

### MOTOR DATA

MODEL	NOMINAL VOLTAGE (VDC)	NO LOAD		AT MAX EFFICIENCY					WEIGHT (Kg)
		SPEED (RPM)	CURRENT (A)	SPEED (RPM)	CURRENT (A)	TORQUE (Kg-cm)	WATT (W)	EFF (%)	
D10079-12	12	3100	3.5	2585	15.2	4.8	182	71	2.28
D10079-24	24	3000	1.7	2500	7.8	4.9	185	73	2.28

### APPEARANCE SIZE



## D109141 DC MOTOR

Brush dc motors with robust design and closed motor body. Motor shafts are supported by ball bearings. Configurations may include gearbox, encoder and brake depending on motor model. Please check the part description for proper selections of combination. Customizations are welcome.



TRANSMOTEC SWEDEN AB

### MODEL NO. DESIGNATIONS

MODEL - VOLTAGE

Example: D109141-12

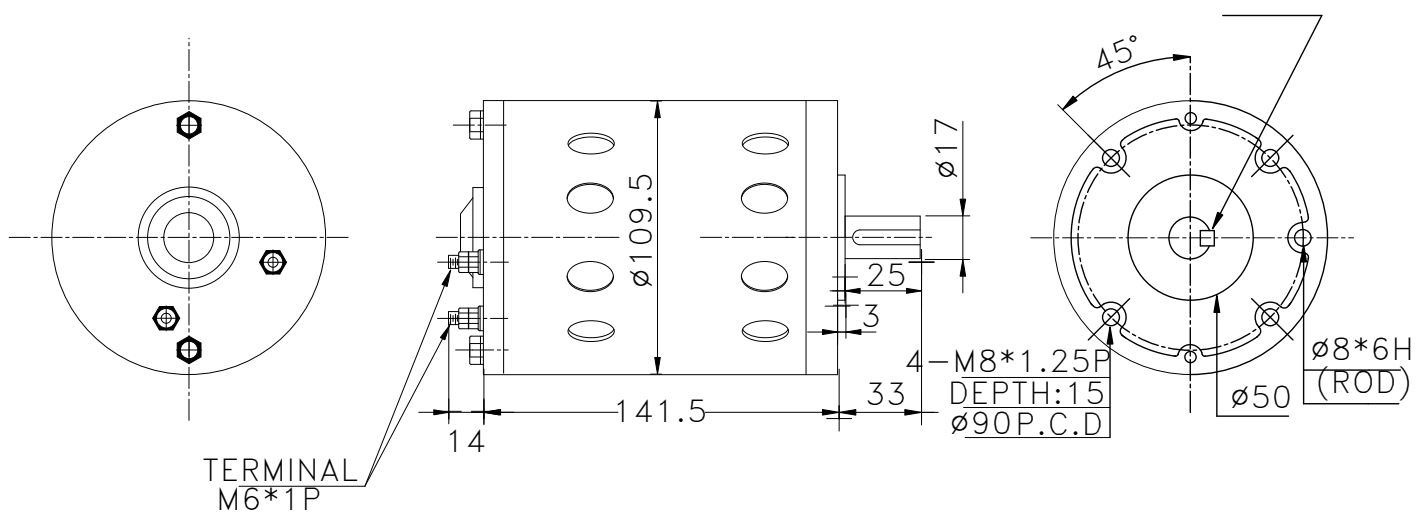
### MOTOR FEATURES

- Robust design, closed motor body
- Ball bearings
- Gearbox combinations
- Encoder options
- Brake options
- Customizations are welcome

### MOTOR DATA

MODEL	NOMINAL VOLTAGE (VDC)	NO LOAD		AT MAX EFFICIENCY					WEIGHT (Kg)
		SPEED (RPM)	CURRENT (A)	SPEED (RPM)	CURRENT (A)	TORQUE (Kg-cm)	WATT (W)	EFF (%)	
D109141-12	12	2700	10.6	2280	31.5	9	380	56	3.44
D109141-24	24	2700	5.8	2340	16.6	9.9	410	62	3.44

### APPEARANCE SIZE



## D109175 DC MOTOR

Brush dc motors with robust design and closed motor body. Motor shafts are supported by ball bearings. Configurations may include gearbox, encoder and brake depending on motor model. Please check the part description for proper selections of combination. Customizations are welcome.



TRANSMOTEC SWEDEN AB

### MODEL NO. DESIGNATIONS

MODEL - VOLTAGE

Example: D109175-12

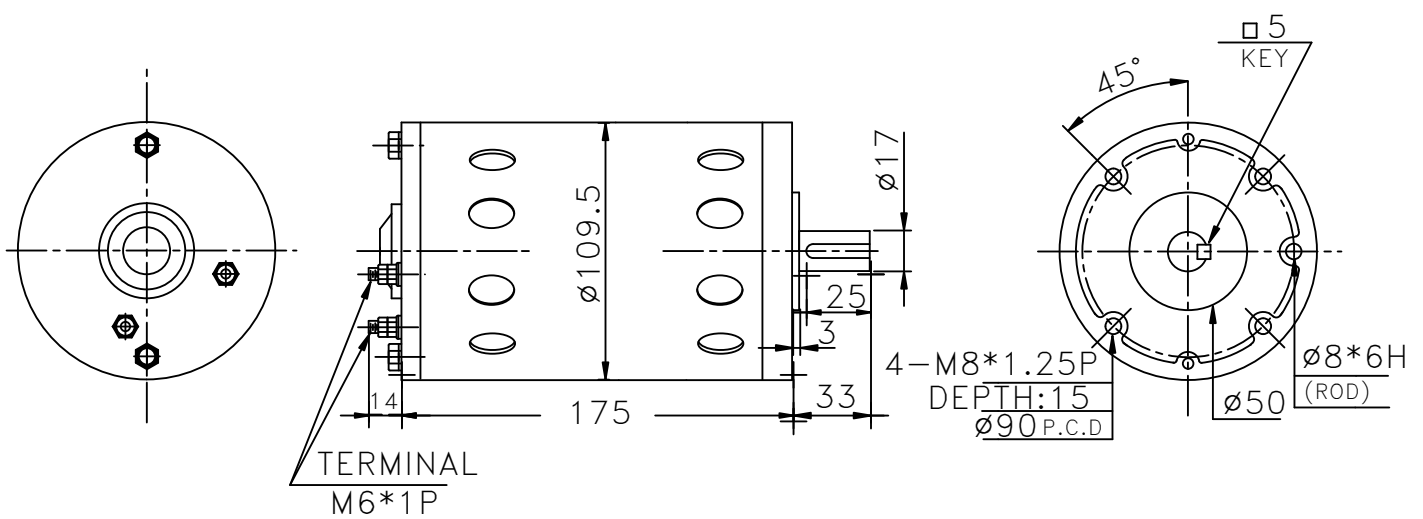
### MOTOR FEATURES

- Robust design, closed motor body
- Ball bearings
- Gearbox combinations
- Encoder options
- Brake options
- Customizations are welcome

### MOTOR DATA

MODEL	NOMINAL VOLTAGE (VDC)	NO LOAD		AT MAX EFFICIENCY					WEIGHT (Kg)
		SPEED (RPM)	CURRENT (A)	SPEED (RPM)	CURRENT (A)	TORQUE (Kg-cm)	WATT (W)	EFF (%)	
D109175-12	12	2000	5.1	1680	27.8	16.2	352	74.8	4.4
D109175-24	24	1900	2.6	1600	14.3	14.9	339	74.1	4.4

### APPEARANCE SIZE



## D123182 DC MOTOR

Brush dc motors with robust design and closed motor body. Motor shafts are supported by ball bearings. Configurations may include gearbox, encoder and brake depending on motor model. Please check the part description for proper selections of combination. Customizations are welcome.



TRANSMOTEC SWEDEN AB

### MODEL NO. DESIGNATIONS

MODEL - VOLTAGE

Example: D123182-12

### MOTOR FEATURES

- Robust design, closed motor body
- Ball bearings
- Gearbox combinations
- Encoder options
- Brake options
- Customizations are welcome

### MOTOR DATA

MODEL	NOMINAL VOLTAGE (VDC)	NO LOAD		AT MAX EFFICIENCY					WEIGHT (Kg)
		SPEED (RPM)	CURRENT (A)	SPEED (RPM)	CURRENT (A)	TORQUE (Kg-cm)	WATT (W)	EFF (%)	
D123182-12	12	1800	6	1500	23	14.9	320	74	6
D123182-24	24	2400	3.2	2020	26	20.3	552	74.3	6

### APPEARANCE SIZE

