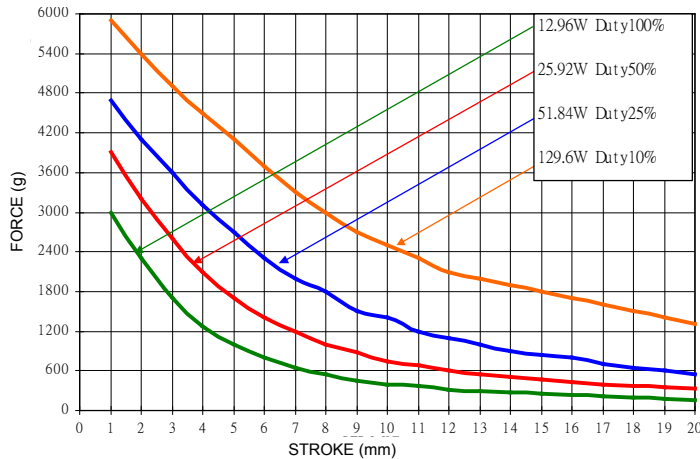


## T3257 TUBULAR SOLENOIDS

Solenoids tubular type for linear motion. Small solenoids with low weight designed for maximal force and performance. Low power losses and low acoustic noise during operation. The plunger force and speed can be increased by applying a higher voltage but with respect to the average duty cycle of the application and ambient temperature. The solenoids are made in basically two types, pull type and push type. The push type is a pull type with an extended plunger rod with an exit at the rear side of the solenoid. In standard version both type solenoids are delivered excluding spring.

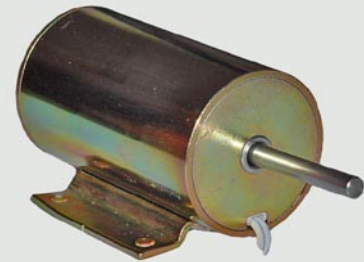
### DIAGRAM



### T3257L PULL TYPE



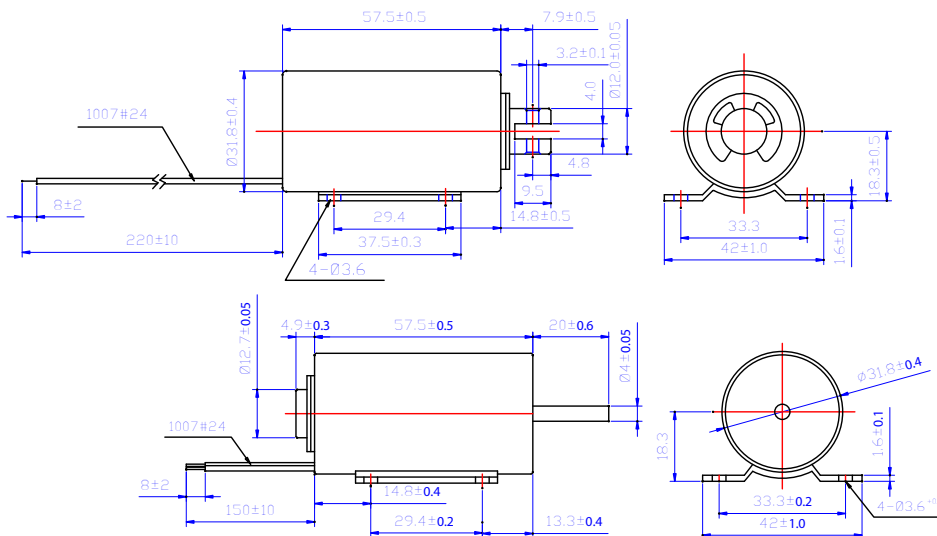
### T3257S PUSH TYPE



### BASIC DATA

Duty cycle (%) = $\frac{\text{"ON" time}}{\text{"ON" time} + \text{"OFF" time}} \times 100\%$			Continuous (100%)	Intermittent (50%)	Intermittent (25%)	Intermittent (10%)
Watts at 20°C			12.96	25.92	51.84	129.6
Maximum "ON" time in seconds			∞	390	60	18
Type no.		Resistance (20°C) ±10%	DC Volts			
T3257L-06V	T3257S-06V	2.77	6	8.5	12	19
T3257L-12V	T3257S-12V	11.07	12	17	24	38
T3257L-24V	T3257S-24V	44.3	24	34	48	76
T3257L-48V	T3257S-48V	177.2	48	68	96	152

### APPEARANCE SIZE



### ADDITIONAL DATA

- Insulation grade: E (120 °C), wire A (105 °C)
- Temperature rise: 80 °C continuous, 40 °C ambient with cooling flange
- Isolation resistance: > 100M ohm 500 VDC
- Dielectric strength: AC1000V 50/60Hz 1 minute
- Operating temp. range: -20 °C ~ + 40 °C
- Life expectancy: Standard life 2.000.000 cycles or more
- Total weight: 295g