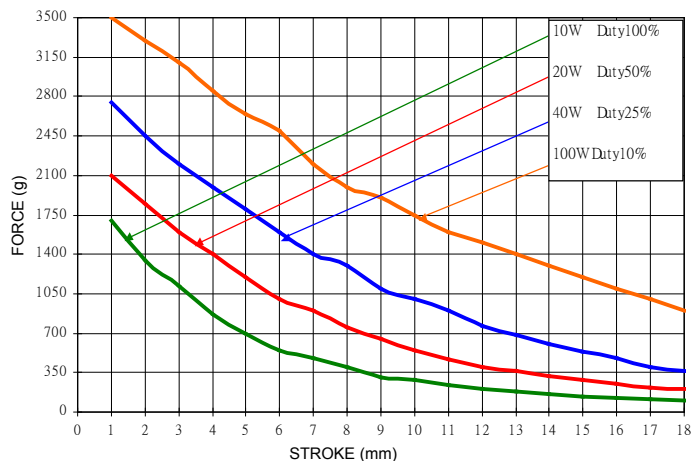


T2551 TUBULAR SOLENOIDS

Solenoids tubular type for linear motion. Small solenoids with low weight designed for maximal force and performance. Low power losses and low acoustic noise during operation. The plunger force and speed can be increased by applying a higher voltage but with respect to the average duty cycle of the application and ambient temperature. The solenoids are made in basically two types, pull type and push type. The push type is a pull type with an extended plunger rod with an exit at the rear side of the solenoid. In standard version both type solenoids are delivered excluding spring.

DIAGRAM



T2551L PULL TYPE



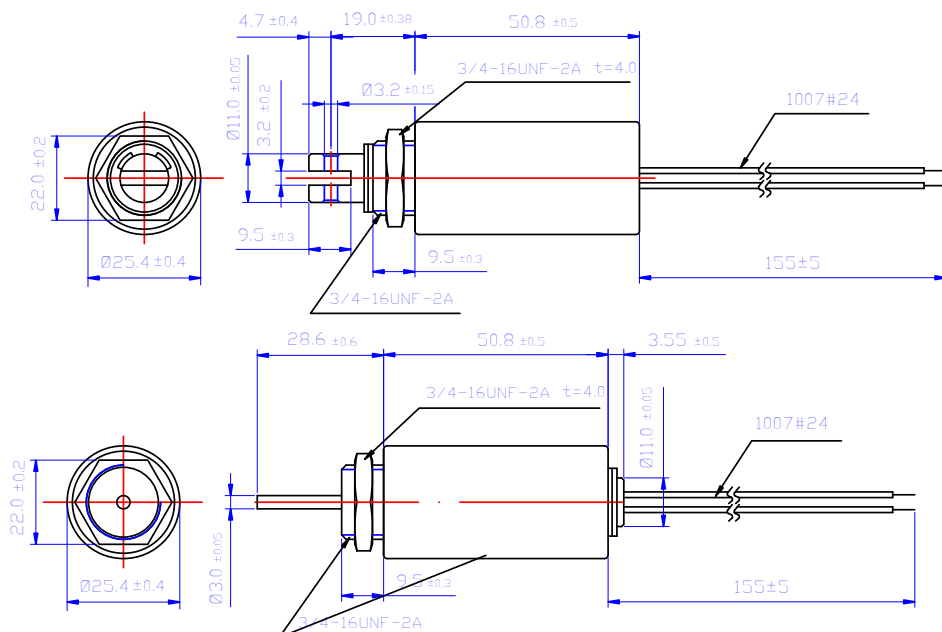
T2551S PUSH TYPE



BASIC DATA

Duty cycle (%) = $\frac{\text{"ON" time}}{\text{"ON" time} + \text{"OFF" time}} \times 100\%$			Continuous (100%)	Intermittent (50%)	Intermittent (25%)	Intermittent (10%)
Watts at 20°C			10	20	40	100
Maximum "ON" time in seconds			∞	360	32	8
Type no.		Resistance (20°C) ±10%	DC Volts			
T2551L-06V	T2551S-06V	3.6	6	8.5	12	19
T2551L-12V	T2551S-12V	14.4	12	17	24	38
T2551L-24V	T2551S-24V	57.6	24	34	48	76
T2551L-48V	T2551S-48V	230.4	48	68	96	152

APPEARANCE SIZE



ADDITIONAL DATA

- Insulation grade: E (120 °C), wire A (105 °C)
- Temperature rise: 80 °C continuous, 40 °C ambient with cooling flange
- Isolation resistance: > 100M ohm 500 VDC
- Dielectric strength: AC1000V 50/60Hz 1 minute
- Operating temp. range: -20 °C ~ + 40 °C
- Life expectancy: Standard life 2.000.000 cycles or more
- Total weight: 178g