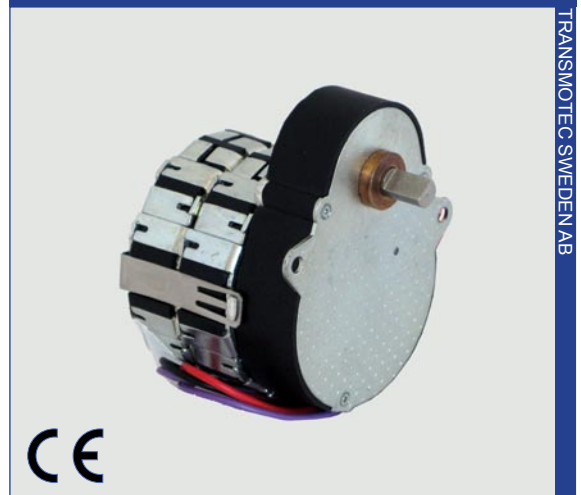


## SA6528 GEARED SYNCHRONOUS AC MOTOR SERIES

AS series reversible synchronous motor is of the permanent magnet type with two stator windings, for single phase AC 50/60 Hz . Phase displacement of the excitation current is achieved by connecting a capacitor in series with one of the stator windings. The sense of rotation is determined by the resulting circular rotating field. Electrical reversal of the sense of rotation is effected by means of a single-pole changeover switch. The 24 pole rotor which has a steel shaft polished to a mirror-finish rotates in sintered bronze bearings. Customizations are welcome.

The gearhead is a multi step gear box with all polyacetal gears which rotate on steel spindles which are polished to a mirror-finish and introduced between metal plates with a plastic frame. All bearings are permanently lubricated and therefore require no maintenance. Motor is attached to the gear box by means of spring clip. Customizations are welcome.

Example of applications include Valve Actuators, Light displays, Textile machinery, Medical equipment, Air conditioning & refrigeration, Dampers, Peristaltic Pumps, Dosing Pumps, Vending machines, CCTV Camera positioning, any positioning Application. Customizations are welcome.



TRANSMOTEC SWEDEN AB

### MODEL NO. DESIGNATIONS



Example: SA6528-24-25.3

GEARED MOTOR DATA (250 RPM @ 50 Hz)							
Reduction		25.3:1	50.3:1	75.4:1	100.3:1	125.2:1	150:1
Rated torque	mNm	14	27	29	48	50	50
Rated speed	rpm	30	15	13	7.5	4	1.7
Weight	g	260	260	260	260	260	260

MOTOR DATA				
Rated Voltage Vn	V	24	110	230
Operation capacitor (60 Hz) CN	µF/VAC	10/50	0.39/250	0.1/400
Operation capacitor (60 Hz) CN	µF/VAC	8.2/50	0.33/250	0.082/400
Lead colour (VN)		Blue	White	Yellow
Tolerance of voltage	%	-10...+15% of rated voltage		
Duty Cycle	%	100		
Rated Frequency	Hz	50		60
Power output at rated voltage	W	0.6		0.63
Speed	rpm	250		300
Running torque at rated voltage	gm-cm	240		210
Power consumption at rated voltage	W	3.1		3.2
Detent torque	gm-cm	60		60

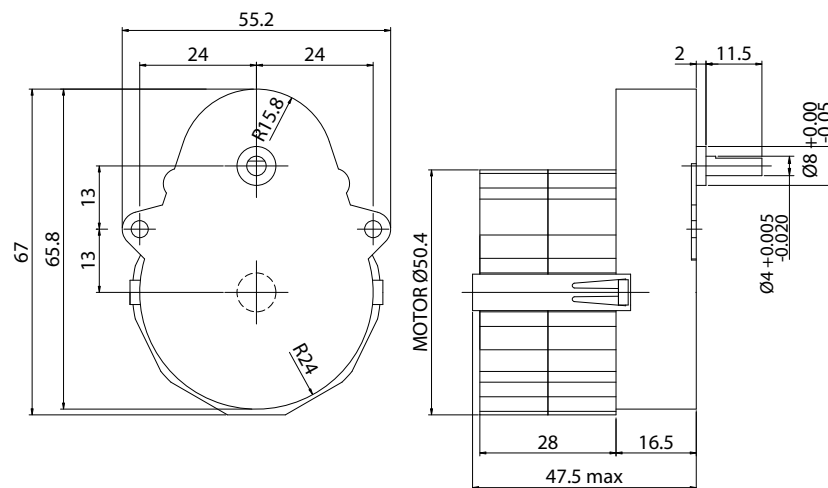
### GEAR DATA

- Spur gear
- Torque 5 Kgcm
- Axial thrust 2 Kg
- Radial force 6 Kg
- Lateral torque 6 Kgcm
- Customizations are welcome

### MOTOR FEATURES

- CE approval
- Reversible synchronous AC motor
- Ambient temperature operation -15...+55 C°
- Ambient temperature storage -20...+100C°
- Thermal class 105 C°
- Motor speed 250 @ 50 Hz rpm
- Life time 3 years in continuous operation
- Motor voltages 24 – 110 – 230 VAC
- HVT 1.5 KV (motor voltage >40V) or 1.5 KV (motor voltage <40V); 30sec.
- Motor can be stopped when the voltage is applied, without being overheated.
- Rotor shaft hardened steel, ground and polished
- Bearings sintered bronze, self lubricating
- Customizations are welcome

### APPEARANCE SIZE



### APPEARANCE SIZE

