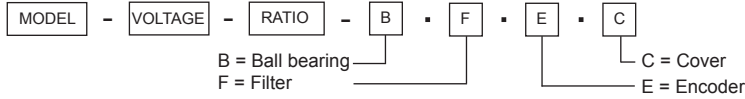


ENCODER VERSIONS FOR PD, SD and SDC MOTOR SERIES

Encoders are available for all our planetary and spur dc gear motors in this product range. This document describes the data for only the encoders. For motor data please refer to the separate motor data sheets. The encoder design is based on a rotating magnetic disk and two hall sensors. It is a simple, long life, robust and low cost technology. In standard our encoders generate the maximum number of pulses that are possible in relation to the diameter of the magnet and encoder.

MODEL NO. DESIGNATIONS



Example: PD3046-12-14-BFEC

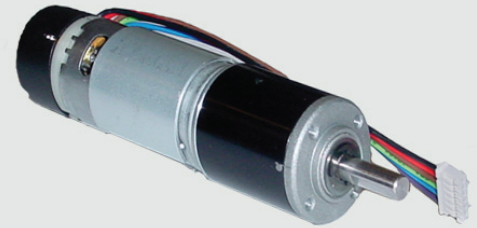
ENCODER FEATURES

- Magnetic hall sensor encoders
- Two sensors channels is standard
- Available for all our gear motors
- Simple design
- Robust and long lifetime
- Low cost
- High number of pulses

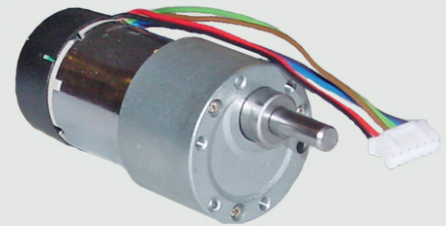
ENCODER SHAPE AND OUTPUT

MOTOR	COVER LENGHT	CABLE LENGTH	MAGNETIC POLES	PPR x2	CPR x2
PD1330	NO COVER	100mm	6	6	12
PD1626	NO COVER	100mm	6	6	12
PD2232	NO COVER	100mm	6	6	12
PD3046	12.6	100mm	14	14	28
PD3237	12.6	100mm	14	14	28
PD3246	12.6	100mm	14	14	28
PD3557	13.5	100mm	14	14	28
PD4266	15.5	100mm	38	38	76
PDS4265	13.5	100mm	14	14	28
SD3039	12.6	100mm	6	6	12
SD3729	14.3	100mm	14	14	28
SD3757	13.5	100mm	14	14	28
SDC3729	14.3	100mm	14	14	28
SDS4360	13.5	100mm	14	14	28

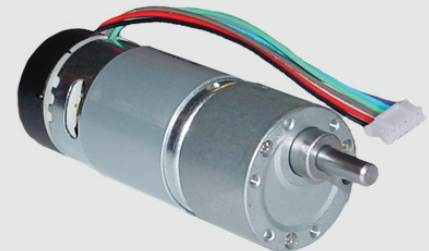
MAGNETIC TWO CHANNEL HALL EFFECT ENCODERS



PD3046-12-5-VCEC



SDC3729-12-6-VCEC



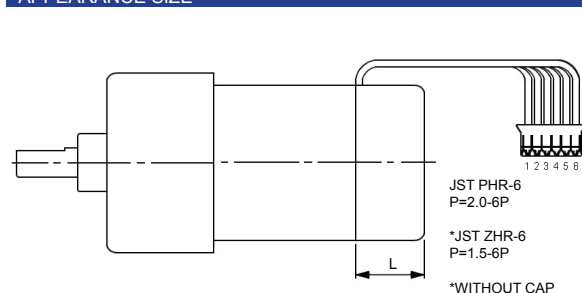
SD3729-12-10-VCEC

TRANSMOTEC SWEDEN AB

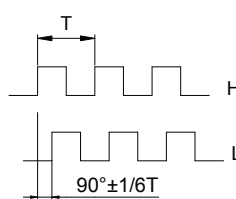
GEARED MOTOR DATA

CHARACTERISTICS	SYMBOL	TEST CONDITIONS	MIN	REF	MAX	UNITS
Supply voltage	Vcc	---	3.5	-	20	V
Output saturation voltage	Vce (sat)	Vcc = 14V ; Ic = 20mA	-	300	700	mV
Output leakage current	Icex	Vce = 14V ; Vcc = 14V	-	< 0.1	10	µA
Supply Current	Ice	Vcc = 20V Output open	-	5	10	mA
Output rise time	tr	Vcc = 14V; RL = 820 Ohm; CL = 20pF	-	0.3	1.5	µS
Output fall time	tf	Vcc = 14V; RL = 820 Ohm; CL = 20pF	-	0.3	1.5	µS
Hall sensor	UTC Unisonic KS1816					

APPEARANCE SIZE



OUTPUT WAVE



TWO CHANNEL ENCODER CONNECTIONS:	
1. BLACK	: - MOTOR
2. RED	: + MOTOR
3. BROWN	: HALL SENSOR Vcc
4. GREEN	: HALL SENSOR GND
5. BLUE	: HALL SENSOR A Vout
6. PURPLE	: HALL SENSOR B Vout